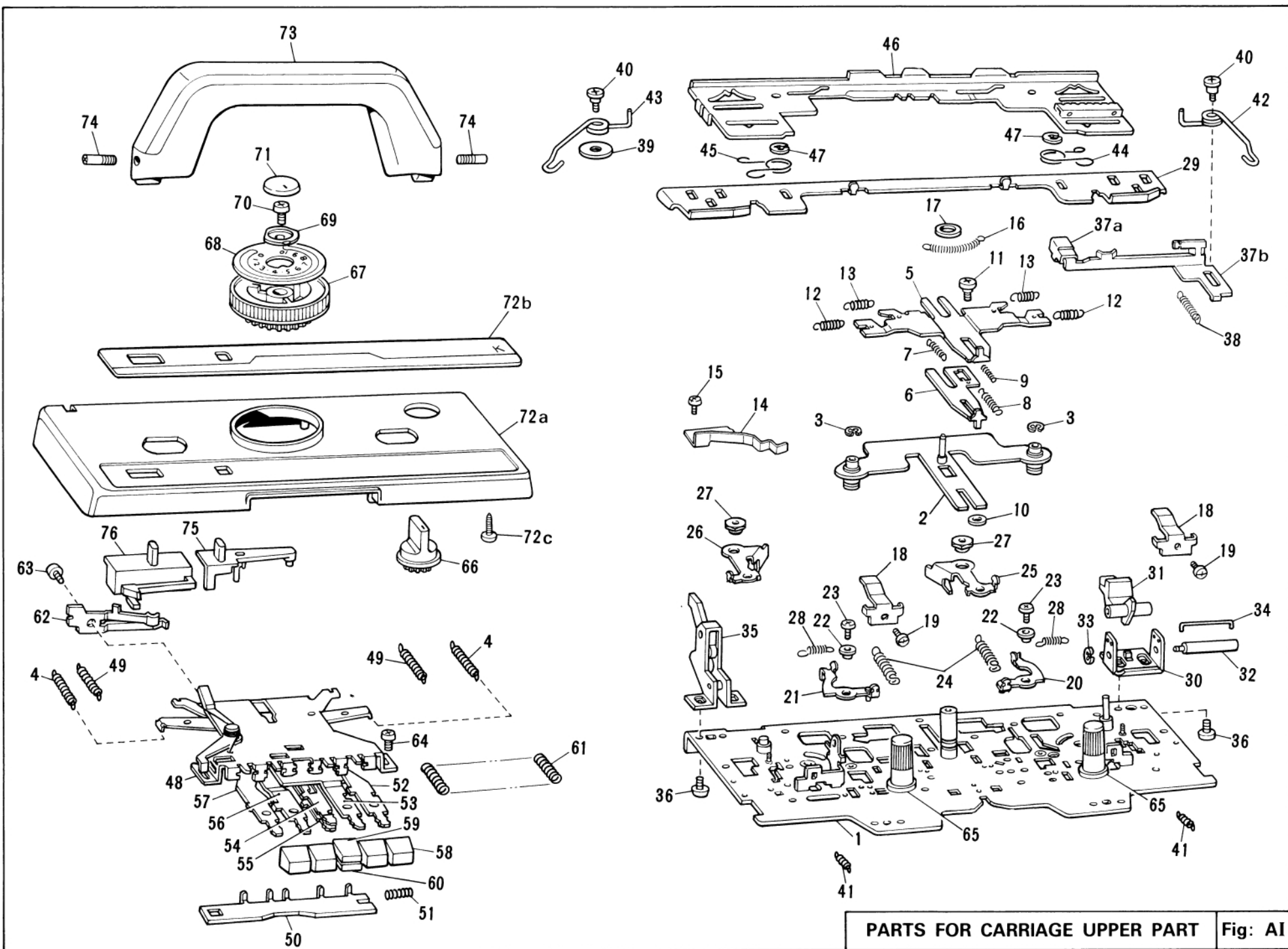


Brother

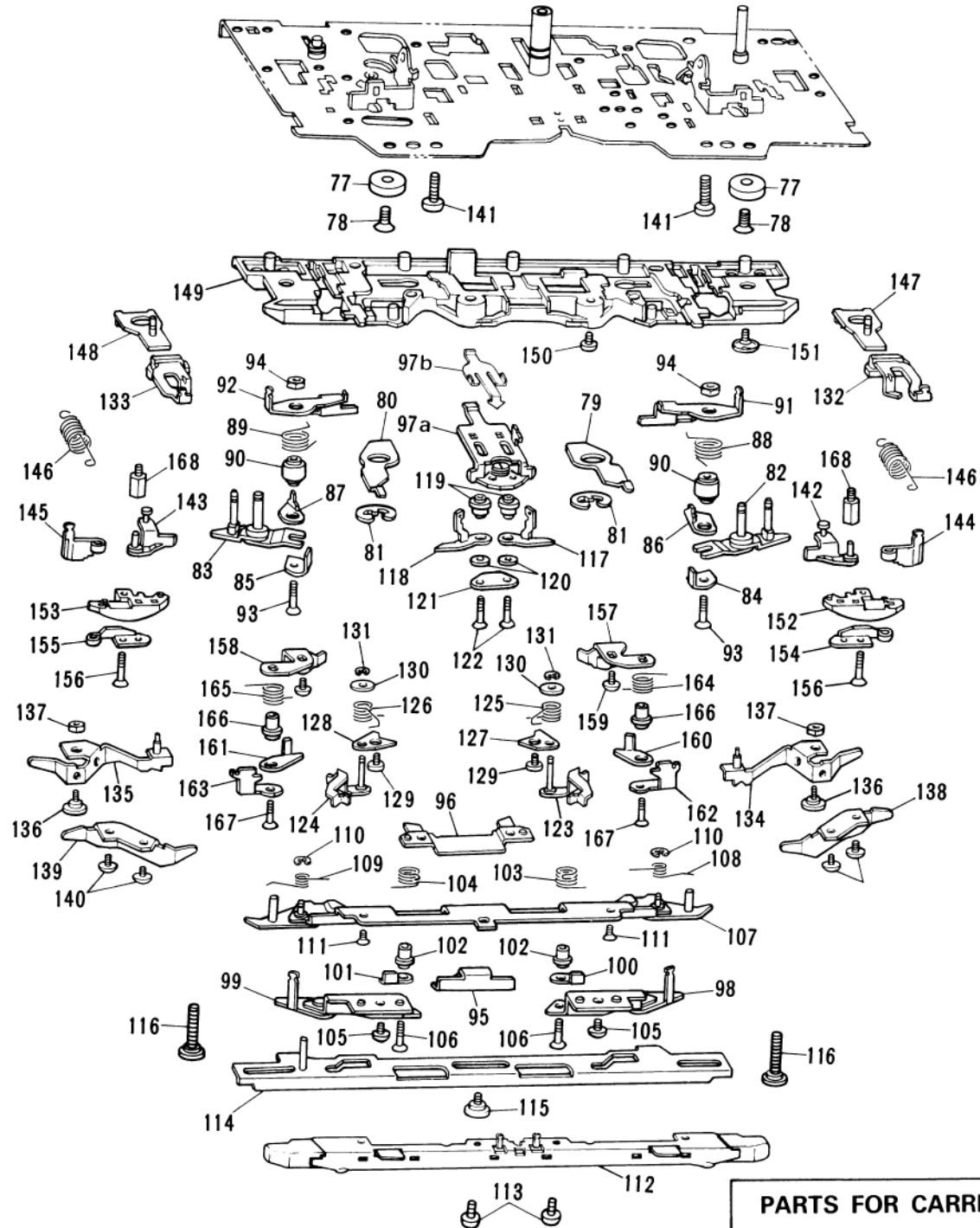
KH940 – FIRST LADY “S”
CATALOGO PARTI DI RICAMBIO



PARTS FOR CARRIAGE UPPER PART Fig: AI

PARTS FOR CARRIAGE UPPER PART

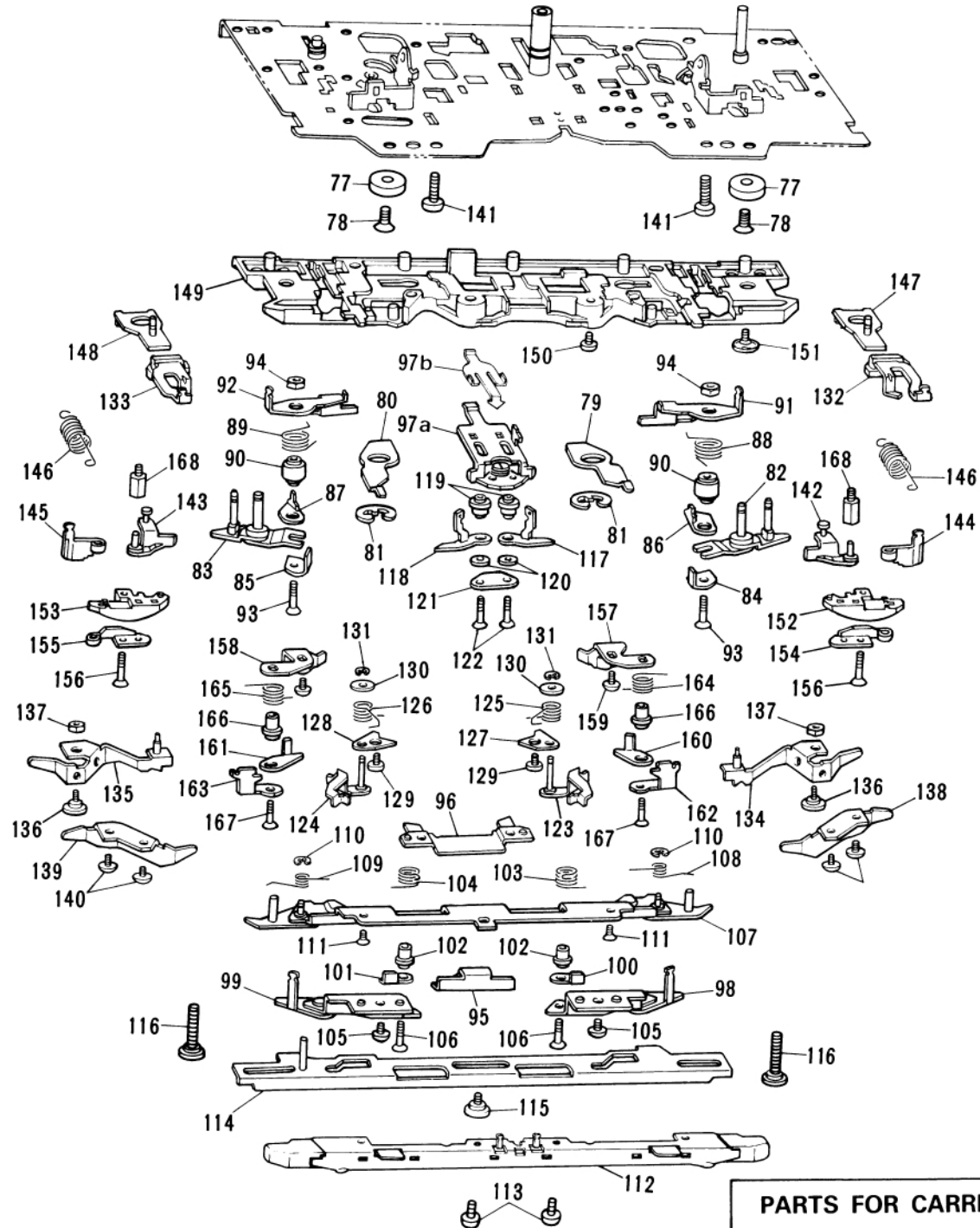
Ref. No.	Parts No.	Description	Revised	Q'ty	Ref. No.	Parts No.	Description	Revised	Q'ty
AI-1-AII-202	416135001	K Carriage complete set for KH940		1	AI-67-68	414175001	Stitch dial assembly		1
AI-1	414011001	Carriage plate		1	67	409599003	Stitch dial		1
2	414022001	Stitch cam guide plate		1	68	413581005	Stitch dial indicator plate		1
3	048030346	Snap ring 3		2	69	406283001	Stitch dial presser		1
4	407432001	Raising cam change spring		2	70	060660606	Screw 3.18 – 40 × 6		1
5	414053000	Change plate A		1	71	409601005	Stitch dial cap		1
6	414054000	Change plate B		1	○ 72a-b	416136001	K carriage cover assembly for KH940		1
7	414370001	Change plate A spring		1	72a	414110001	K carriage cover (White)		1
8	414252001	Change plate B spring		1	○ 72b	416137001	Carriage cover decoration plate for KH940		1
9	413452001	Change plate spring		1	72c	037351615	Screw 3.5 × 16		2
10	414251001	Collar		1	73	409605007	K Carriage handle (White)		1
11	414025001	Change plate guide collar		1	74	409608001	Screw		2
12	414241001	MC cam change spring		2	75	413437001	Plain lever knob (White)		1
13	414178001	MC cam spring A		2	76	414112001	H.C.L Knob (White)		1
14	414065001	Front slide plate spring		1					
15	060660406	+ – Screw 3.18 – 40 × 4		1					
16	414069001	Tuck cam spring		1					
17	414180001	Presser ring		1					
18	414084001	Handle look spring		2					
19	062670406	Screw 3.57 – 40 × 4		2					
20	414014001	Intarsia lever, R		1					
21	414017001	Intarsia lever, L		1					
22	414019001	Intarsia lever collar		2					
23	060660406	Screw 3.18 – 40 × 4		2					
24	414090001	Intarsia lever spring		2					
25	414092001	Intarsia cam A, R		1					
26	414093001	Intarsia cam A, L		1					
27	414094001	Nut		2					
28	414095001	Intarsia cam A spring		2					
29	409554001	Rear plate		1					
30-34	410130001	Row cunter tripper		1					
35	410132101	Knit leader tripper		1					
36	060660406	Screw 3.18 – 40 × 4		4					
37	410141003	K carriage sensor magnet assembly		1					
38	412131001	Shift spring for K carriage sensor		1					
39	025050335	Washer		1					
40	410146001	Shaft for K carriage sensor magnet		2					
41	410135001	End needle selection cam spring		2					
42	414189001	Needle selection change spring, R		1					
43	414190001	Needle selection change spring, L		1					
44	409543001	Connecting plate spring, R		1					
45	409544001	Connecting plate spring, L		1					
46	410138001	Upper slide plate		1					
47	048040346	Snap ring 4		2					
48-62	414113001	Cam button unit		1					
63	060660506	Screw 3.18 – 40 × 5		1					
64	060670406	Screw 3.57 – 40 × 4		2					
65	409596003	Thumb nut		2					
66	409597006	Change knob		1					



PARTS FOR CARRIAGE LOWER PART Fig: AII

PARTS FOR CARRIAGE LOWER PART

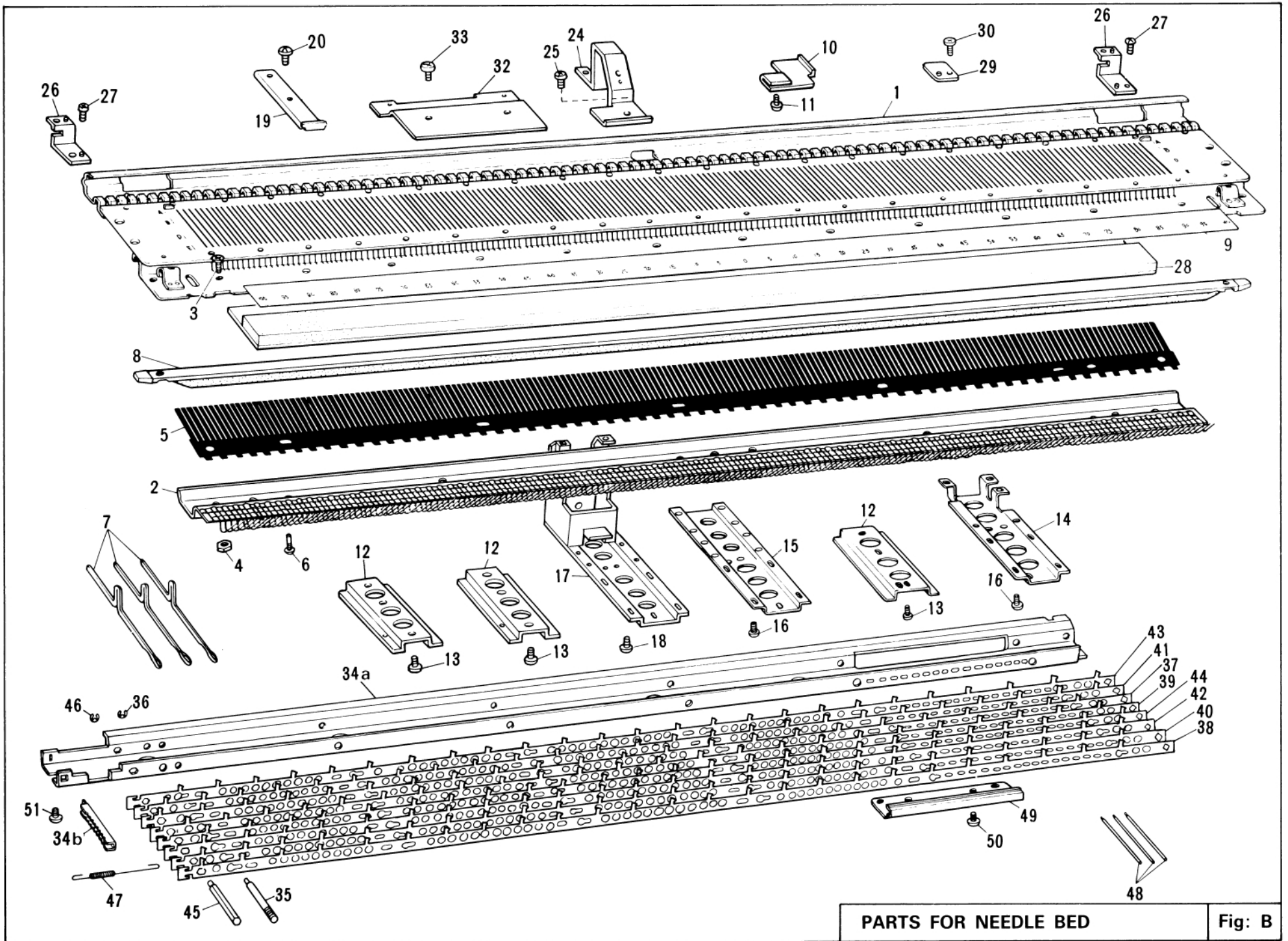
Ref. No.	Parts No.	Description	Revised	Q'ty	Ref. No.	Parts No.	Description	Revised	Q'ty
All- 77	407285000	Carriage magnet 16 × 18		2	All-125	414075001	Valve cam G spring, R		1
78	408773006	Flat head screw 3.18 – 40 × 9		2	126	414076001	Valve cam G spring, L		1
79	414242001	Raising cam guide, R		1	127/128	414077001	Cam plate		1
80	414243001	Raising cam guide, L		1	129	414049001	Screw		2
81	048070346	Snap ring		2	130	025350233	Washer		2
82	414026001	Stitch cam assembly, R		1	131	048020346	Snap ring		2
83	414030001	Stitch cam assembly, L		1	132	409510101	Selection cam for right end needle		1
84	407296001	Sub stitch cam, R		1	133	409513101	Selection cam for left end needle		1
85	407297001	Sub stitch cam, L		1	134	414078001	Separation cam, R		1
86	410488001	Valve cam D, R		1	135	414080001	Separation cam, L		1
87	410489001	Valve cam D, L		1	136	410115001	Screw 3.18		2
88	410490001	Valve cam D spring, R		1	137	021660306	Nut 3.18 – 40		2
89	410491001	Valve cam D spring, L		1	138	414082001	Guide cam F, R		1
90	414245001	Sub stitch cam shaft		2	139	414083001	Guide cam F, L		1
91	414032001	MC cam, R		1	140	413554001	Screw 3.18 × 3		4
92	414033001	MC cam, L		1	141	062681206	Screw 4.37 – 40 × 12		2
93	407312001	Screw		2	142	414185001	Needle selection change cam, R		1
94	021660306	Nut		2	143	414187001	Needle selection change cam, L		1
95	414034001	Slide cam		1	144	414203001	Valve cam F, R		1
96	414035001	Slide cam guide		1	145	414204001	Valve cam F, L		1
97a	414036001	Guide cam C		1	146	410129001	Valve cam F spring		2
97b	414462000	Guide cam C spring		1	147	410123001	Connecting plate, R		1
98	414041001	Guide cam B, R		1	148	410125001	Connecting plate, L		1
99	414045001	Guide cam B, L		1	149	414086001	Rear foot		1
100	414176001	Valve cam B, R		1	150	060660406	Screw 3.18 – 40 × 6		4
101	414177001	Valve cam B, L		1	151	409494001	Screw 3.57		2
102	414050001	Valve cam B shaft		2	152	417167001	Selection cam, R		1
103	414051001	Valve cam B spring, R		1	153	417168001	Selection cam, L		1
104	414052001	Valve cam B spring, L		1	154	409537001	Guide cam G, R		1
105	413554001	Screw 3.18 × 3		2	155	409538001	Guide cam G, L		1
106	407299001	Screw		2	156	410030001	Screw 2.38 × 14		2
107	414056001	Guide cam A		1	157	414100001	Sub selection cam, R		1
108	414194001	Change cam spring, R		1	158	414101001	Sub selection cam, L		1
109	414195001	Change cam spring, L		1	159	413554001	Screw 3.18 × 3		2
110	048025346	Snap ring		2	160	414102001	Intarsia cam B, R		1
111	413285001	Screw 3.18 × 4		2	161	414103001	Intarsia cam B, L		1
112	414172001	Front foot		1	162	414104001	Intarsia cam B plate, R		1
113	413554001	Screw 3.18 × 3		2	163	414105001	Intarsia cam B plate, L		1
114	414062001	Front slide plate		1	164	414106001	Intarsia cam B spring, R		1
115	414184001	Screw 3.18 × 4		1	165	414107001	Intarsia cam B spring, L		1
116	408504001	Screw 3.18		2	166	414108001	Intarsia cam B shaft		2
117	414066001	Tuck cam, R		1	167	407299001	Screw		2
118	414067001	Tuck cam, L		1	168	414091001	Selection change cam shaft		2
119	414068001	Tuck cam, shaft		2					
120	414179001	Washer		2					
121	407340001	Tuck cam plate		1					
122	407299001	Screw		2					
123	414070001	Valve cam G, R		1					
124	414073001	Valve cam G, L		1					



PARTS FOR CARRIAGE LOWER PART Fig: AII

PARTS FOR CARRIAGE SINKER PLATE

Ref. No.	Parts No.	Description	Revised	Q'ty	Ref. No.	Parts No.	Description	Revised	Q'ty
AII-169-201	415551001	Sinker plate assembly		1					
169-191	415552001	Sinker plate arm assembly		1					
169	409979001	Sinker plate arm		1					
170	414122000	Weaving thread guide, R		1					
171	414123000	Weaving thread guide, L		1					
172	409162001	Tapping screw 2.6		6					
173	409626001	Thumb screw		2					
174a	410026001	Weaving lever assembly, R		1					
174b	410027001	Weaving lever assembly, L		1					
175	410003001	Latch opening brush, R		1					
176	410004001	Latch opening brush, L		1					
177	414191000	Latch presser plate, R		1					
178	414192000	Latch presser plate, L		1					
179	037280616	Screw 2.6 × 6		4					
180	414417001	Weaving pattern brush		2					
181	408316001	Screw 3.18		2					
182	409629003	Weaving lever knob		2					
183	407441001	Weaving lever spring		2					
184	408305001	Screw 3.18 × 5		4					
185	409614001	Sinker plate, R		1					
186	409618001	Sinker plate, L		1					
187	407702001	Wheel brush		2					
188	405184002	Plastic gear		2					
189	413403001	Rubber wheel		2					
190a	412049006	Screw		6					
190b	409621001	Screw 3.18 × 4		6					
191	410970001	Holder		2					
192	409625000	Magnet holder plate		1					
193	407454000	Magnet, R		1					
194	407578000	Magnet, L		1					
195	407450004	Yarn feeder knob		1					
196	414196001	Yarn presser brush, R		1					
197	414197001	Yarn presser brush, L		1					
198	414249001	Screw		2					
199	414250001	Spring		1					
200	413247001	Screw 2.38 × 10		2					
201	414130001	Yarn feeder body		1					

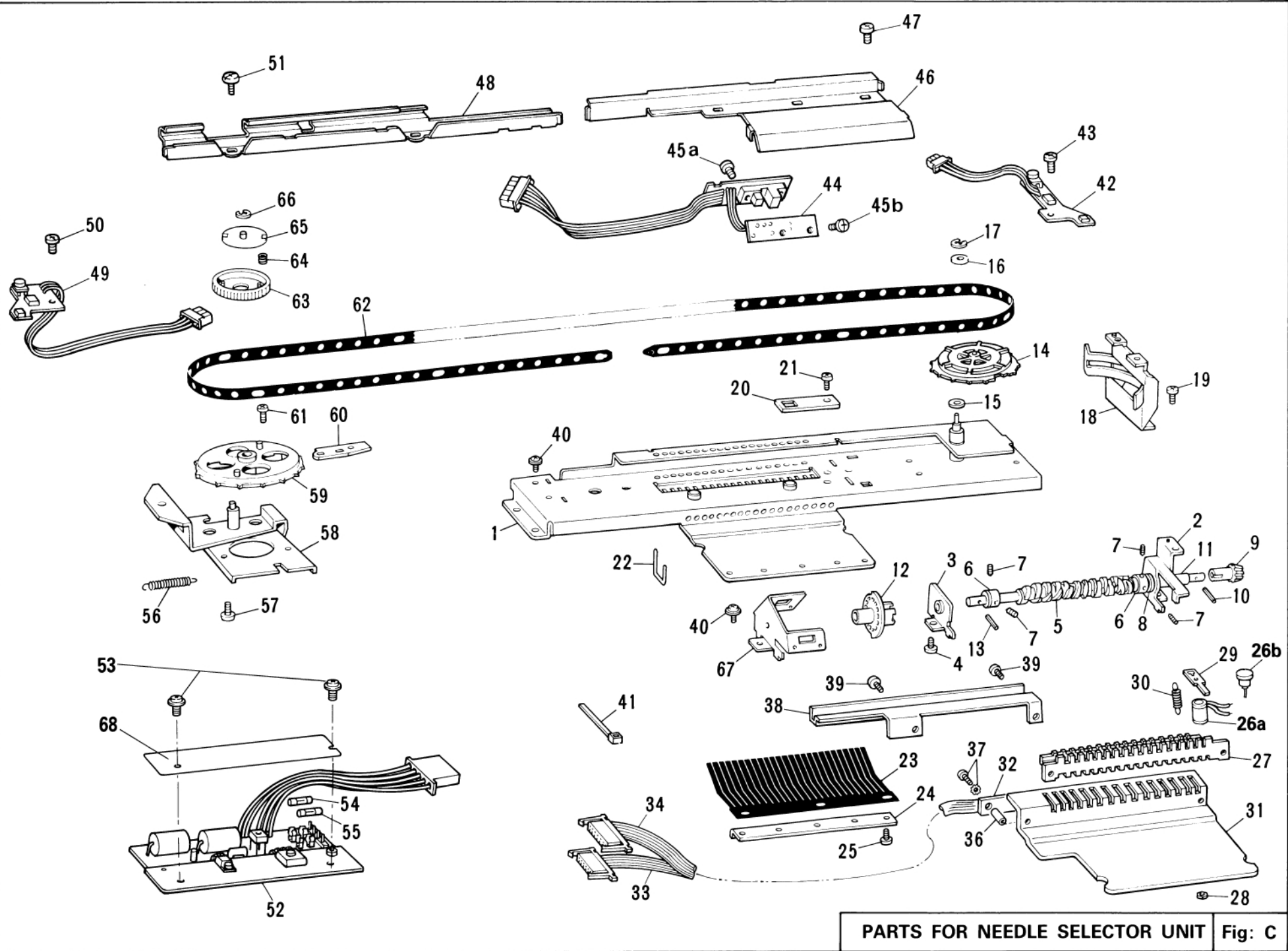


PARTS FOR NEEDLE BED

Fig: B

PARTS FOR NEEDLE BED

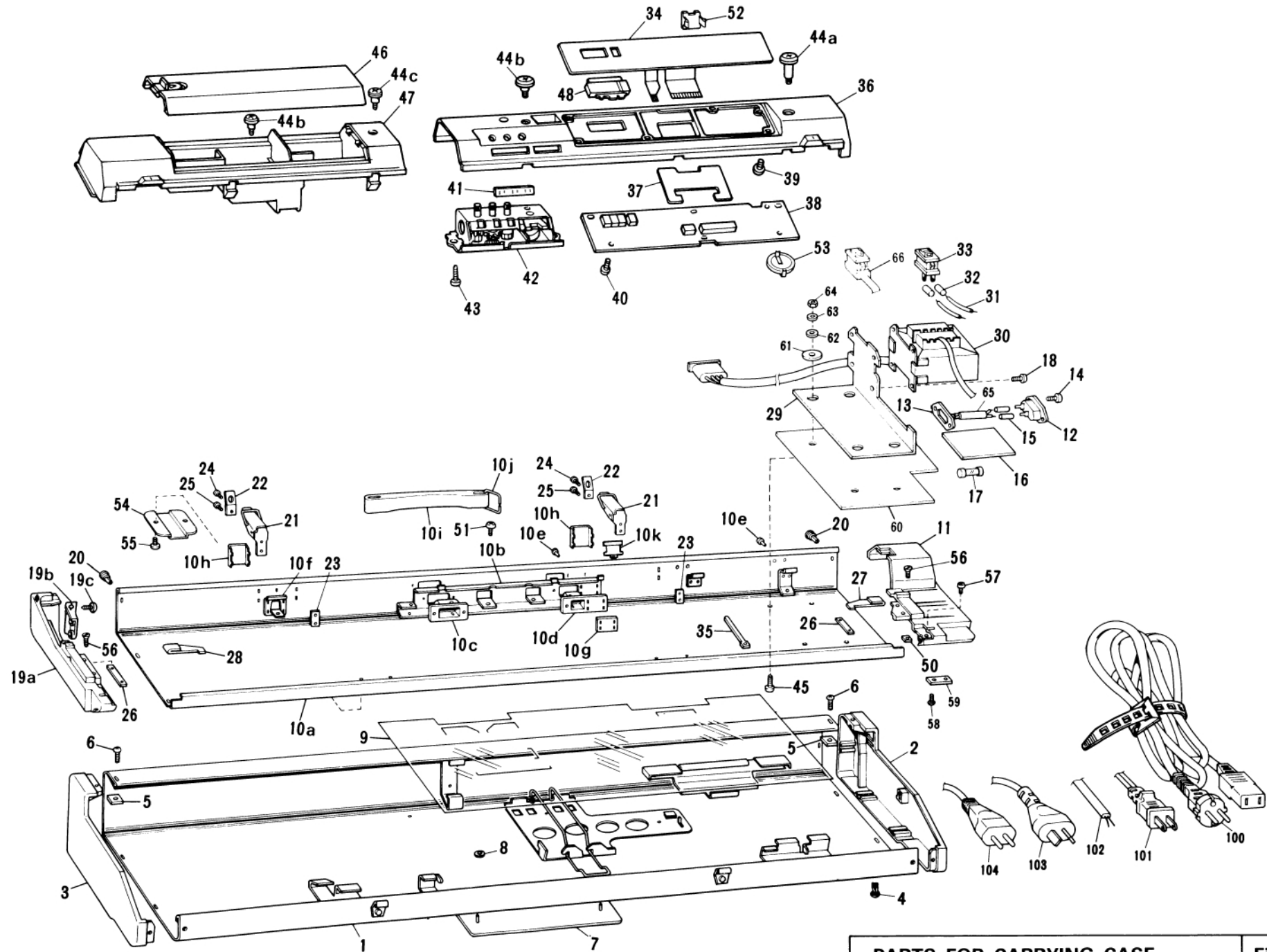
Ref. No.	Parts No.	Description	Revised	Q'ty	Ref. No.	Parts No.	Description	Revised	Q'ty
B- 1	412803101	Needle bed assembly		1					
2	410154101	Needle bed comb assembly		1					
3	412109004	Screw 2.38 - 56 x 7		12					
4	405077001	Nut		12					
5	407112001	Needle retaining spring		1					
6	407687001	Screw 3.18		3					
7	407113001	Plain needle		200					
8	409643003	Needle presser bar assembly		1					
9	410157001	Needle position indicator		1					
10	410156000	Timing belt cover		1					
11	412048006	Screw 3.18 - 40 x 3		1					
12	407120000	Lower holder plate		3					
13	409197001	Screw with washer		6					
14	410159000	Stay, R		1					
15	410160000	Stay centre, A		1					
16	409197001	Screw 3.18 x 4		8					
17	410161101	Stay centre, B		1					
18	409197001	Screw with washer		4					
19	410170000	Carrying case reinforcing plate		1					
20	417894001	Screw 3.18 x 3		1					
24	410177000	Pattern case setting base		1					
25	417894001	Screw 3.18 x 3		1					
26	410175000	Position sensor board holder plate		2					
27	417894001	Screw 3.18 x 3		2					
28	407703000	Sponge bar		1					
29	413952000	Pattern case holder plate		1					
30	417894001	Screw 3.18 x 3		1					
32	413924000	Insulation sheet holder plate		1					
33	060660606	Screw 3.18 - 40 x 6		2					
34-47	410188101	Needle selector plate holder assembly		1					
34-36	410189101	Needle selector plate holder		1					
35	408159001	Shaft A		6					
36	048025346	Snap ring		6					
37	410191001	Needle selector plate 1		1					
38	410192001	Needle selector plate 2		1					
39	410193001	Needle selector plate 3		1					
40	410194001	Needle selector plate 4		1					
41	410195001	Needle selector plate 5		1					
42	410196001	Needle selector plate 6		1					
43	410197001	Needle selector plate 7		1					
44	410198001	Needle selector plate 8		1					
45	408172001	Shaft B		1					
46	048025346	Snap ring		1					
47	410476001	Needle selector plate spring		8					
48	408098001	N.S.P. Operation lever		16					
49	410199001	Operation lever presser		1					
50	409197001	Screw with washer		2					
51	409197001	Screw with washer		9					



PARTS FOR NEEDLE SELECTOR UNIT Fig: C

PARTS FOR NEEDLE SELECTOR UNIT

Ref. No.	Parts No.	Description	Revised	Q'ty	Ref. No.	Parts No.	Description	Revised	Q'ty
C- 1-39	413906001	Rotary cam holder body assembly		1	C-47	060630416	Screw 2.38 – 56 × 4		3
1	410202001	Rotary cam holder body		1	48	410176001	Timing belt cover, L		1
2	410207001	Rotary cam holder, R		1	49	413928001	Left position sensor board assembly		1
3	410210001	Rotary cam holder, L		1	50	060660406	Screw 3.18 – 40 × 4		1
4	409197001	Screw with washer		2	51	060660406	Screw 3.18 – 40 × 4		2
5	413907001	Rotary cam		1	52	413920001	Power supply board assembly for 220V/230V/240V		1
6	417808051	Rotary cam adjuster collar		2		414472001	Power supply board assembly for 115V		1
7	014400432	Stopper screw		4	53	409197001	Screw 3.18 × 4		2
8	411013001	Washer		1	54	410475001	Tubular fuse 2A for 220V/230V/240V		1
9	410216000	Bevel gear Z12		1		U15083000	Tubular fuse 2A for 115V		1
10	047201042	Spring pin AW2		1	55	413943001	Tubular fuse 5A for 220V/230V/240V		1
11	410217001	Spacer 6.2 × 19		1	55	U15100000	Tubular fuse 5A for 115V		1
12	413910001	Slit disc		1	56	410016001	Belt tention control spring		1
13	047201242	Spring pin AW2		1	57	406397001	Screw 3.18 × 5		2
14	416602001	Belt pulley, R		1	58-66	410181002	Pulley assembly		1
15	410223001	Washer 6.3		1	58	410180001	Pulley holder plate		1
16	400806004	Washer		1	59	410182002	Pulley		1
17	048025346	Snap ring		1	60	412034000	Pulley adjusting plate		1
18	410224000	Encoder board holder		1	61	409197001	Screw 3.18 × 4		2
19	409197001	Screw with washer		2	62	410186001	Timing belt		1
20	408068001	Card reader guide stopper		1	63	410477001	Friction plate		1
21	060660406	Screw 3.18 – 40 × 4		1	64	410479001	Friction plate spring		4
22	410225001	Rotary cam lever		16	65	410478000	Presser for friction plate spring		1
23	410226001	Rotary cam lever spring		1	66	048030346	Snap ring		1
24	410227000	Cam lever spring presser plate		1	67	416498000	Encoder board holder plate		1
25	060660406	Screw 3.18 – 40 × 4		5	68	415662001	Protection sheet		1
26-37	414004001	Needle selector solenoid assembly		1					
26a	417787001	Bobbin		16					
26b	410231001	Shaft		16					
27	410238001	Solenoid Yoke 16		1					
28	021260206	Nut 2 – 40 × 2.6		16					
29	410239001	Armature		16					
30	418352001	Spring for armature		16					
31	410241000	Heat Sink plate for solenoide		1					
32	410327101	Solenoid board		1					
33	414006001	Solenoid cord 1		1					
34	414007001	Solenoid cord 2		1					
36	408481002	Spacer 4 × 7		2					
37	415616001	Screw with washer 3 × 14		2					
38	410243000	Timing belt cover, R		1					
39	060670506	Screw 3.75 – 40 × 5		2					
40	409197001	Screw with washer		6					
41	547262001	Wire binder		1					
42	413925001	Right position sensor board assembly		1					
43	060660406	Screw 3.18 – 40 × 4		1					
44	416500001	Encoder sensor assembly		1					
45a	062660806	Screw 3.18 – 40 × 8		2					
45b	062660506	Screw 3.18 – 40 × 5		2					
46	413911000	Cord cover		1					

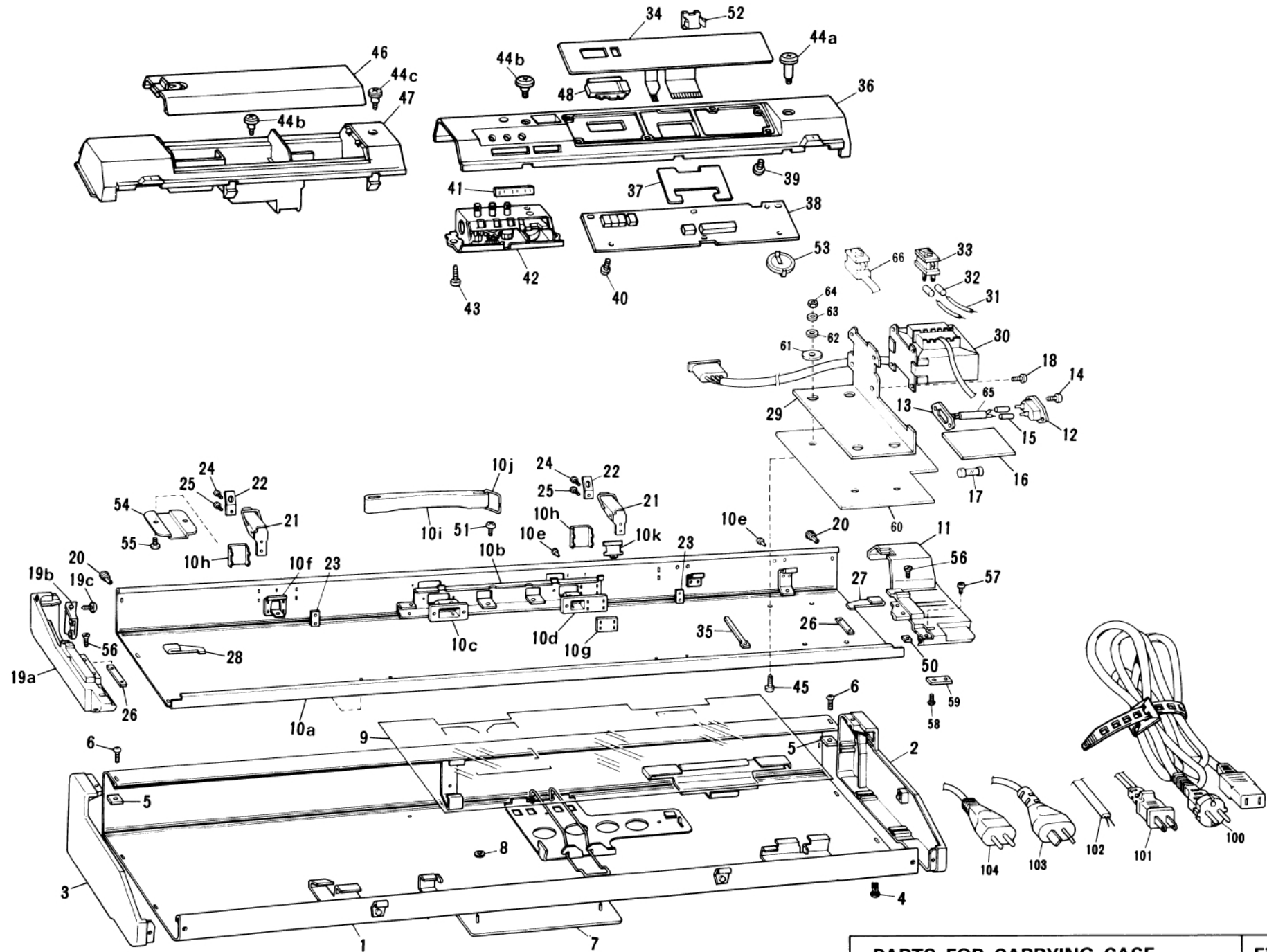


PARTS FOR CARRYING CASE

Fig: D

PARTS FOR CARRYING CASE

Ref. No.	Parts No.	Description	Revised	Q'ty	Ref. No.	Parts No.	Description	Revised	Q'ty
○ D-1-30,45,60-66	416174001	Carrying case complete set KH940 (220V)		1	27	409640001	Extention rail lock spring, R		1
○ D-1-30,45,60-66	416138001	Carrying case complete set KH940 (240V)		1	28	409639001	Extention rail lockspring, L		1
○ D-1-33,45,61-65	416264001	Carrying case complete set KH940 for UL/TAIWAN		1	29	410818000	Heat sinker plate for 220V/230V/240V		1
○ D-1-9	416140001	Carrying case upper assembly KH940		1	30	410517000	Heat sinker plate for 115V		1
1	412885002	Carrying case upper body		1		414816001	Power transformer for 240V		1
2+5	486484003	Upper side plate, R		1		413961001	Power transformer for 220V		1
3+5	486485003	Upper side plate, L		1		414580001	Power transformer for 230V		1
4	408194003	Plastic rivet		8		414478001	Power transformer for 115V		1
5	407252001	Square nut 3.18		2	31	410400001	Promary cord for 115V		3
6	412360001	Screw 3.18 × 6		2	32	410410000	Insulation sleeve 4 × 15 for 115V		4
○ 7	416141001	Brother name plate for KH940		1	33	410309001	Power switch-1801 for 115V		1
8	408784001	Pushing nut		2	34	413963001	Operation P.C. board assembly		1
9	412859001	Packing instruction sheet		1	D-34,36-43,48,52,53		Pattern case whole assembly		1
10-30,60-66		Carrying case lower assembly for 220V/230V/240V		1	○ 35	547262001	Wire binder		2
10-33,45,61-65		Carrying case lower assembly for 115V (UL, CSA)		1	○ 36	416144001	Pattern case for KH940		1
10a-k	413935001	Carrying case lower body		1	○ 37	414351000	Cord protection sheet		1
11-17,65,66	413938001	Lower side plate R, assembly for 220V		1	○ 38	416540001	Main P.C. board assembly		1
	414812001	Lower side plate R, assembly for 230V		1	39	412048006	Screw 3.18 – 40 × 3		6
	414827001	Lower side plate R, assembly for 240V		1	40	037280816	Screw 2.6 × 8		6
11-17,31-33,65	410849002	Lower side plate R, assembly for 115V (UL/TAIWAN)		1	41	409721003	Row counter panel		1
	411422002	Lower side plate assembly for 115V (CSA)		1	42	410531003	Row counter assembly		1
11+26,27+50	487060003	Lower side plate R, for 220V/230V/240V		1	43	037351016	Screw 3.5 × 10		2
	487063002	Lower side plate R, for 115V (UL/CSA)		1	44a	413946001	Screw 3.18		1
12	412033001	AC inlet		1	44b	410535001	Screw 3.18		2
	410816001	AC inlet for NEW ZEALAND		1	44c	410529001	Screw 3.18		1
13	410306000	AC inlet clamp		1	45	410864001	Screw 3.18 × 14 for Heat sinker (220V/230V/240V)		4
14	060301004	Screw 3 × 10		2		408306001	Screw 3.18 × 6 for Heat sinker (115V)		4
15	410410000	Insulation sleeve 4 × 15		1	46-47	413947101	Accessory box assembly (White)		1
16-17	410817001	Filter board assembly for 220V/230V/240V		1	46	413948101	Accessory box (White)		1
	410851001	Filter board assembly for 115V (UL)		1	47	413949001	Lid for box (White)		1
	411423001	Filter board assembly for 115V (CSA)		1	48	413942001	Filter		1
17	410828001	Tubular fuse 1A for 220V/230V/240V		1	50	409700001	Square nut		2
	411433001	Tubular fuse 1A for 115V (UL, CSA)		1	51	060660406	Screw 3.18 – 40 × 4		2
18	060670606	Screw 3.57 – 40 × 6		4	52	413941001	Connector cover		1
19a,b+26	486487003	Lower side plate, L		1	○ 53	416097001	Battery		1
19b	414005001	Yarn tention support bace		1	54	407261001	Table clamp setting plate		2
19c	037281216	Screw 2.6 × 12		4	55	060660704	Screw 3.18 – 40 × 7		4
20	408194003	Plastic rivet		6	56	407119001	Screw 4.37		4
21	404022002	Carrying case lock assembly		2	57	060660704	Screw 3.18 – 40 × 7		2
22	404027001	Carrying case lock spring		2	58	037300816	Screw 3 × 8		2
23	403542001	Fastening plate		2	59	410891001	Presser for cord clamp		1
24	405658001	Fastening screw 3.18		2	60	410830000	Insulation board		1
25	062660504	Fastening screw 3.18 – 40 × 5		2	61	410829000	Insulation spacer		4
26	407265001	Needle bed fastening plate		2	62	025660336	Washer 3.18		4
					63	028350246	Spring washer		4
					64	021660206	Nut		4
					65	410895001	AC inlet cord		1
					66	410892001	Power WK2A5 assembly for 220V/230V/240V		1

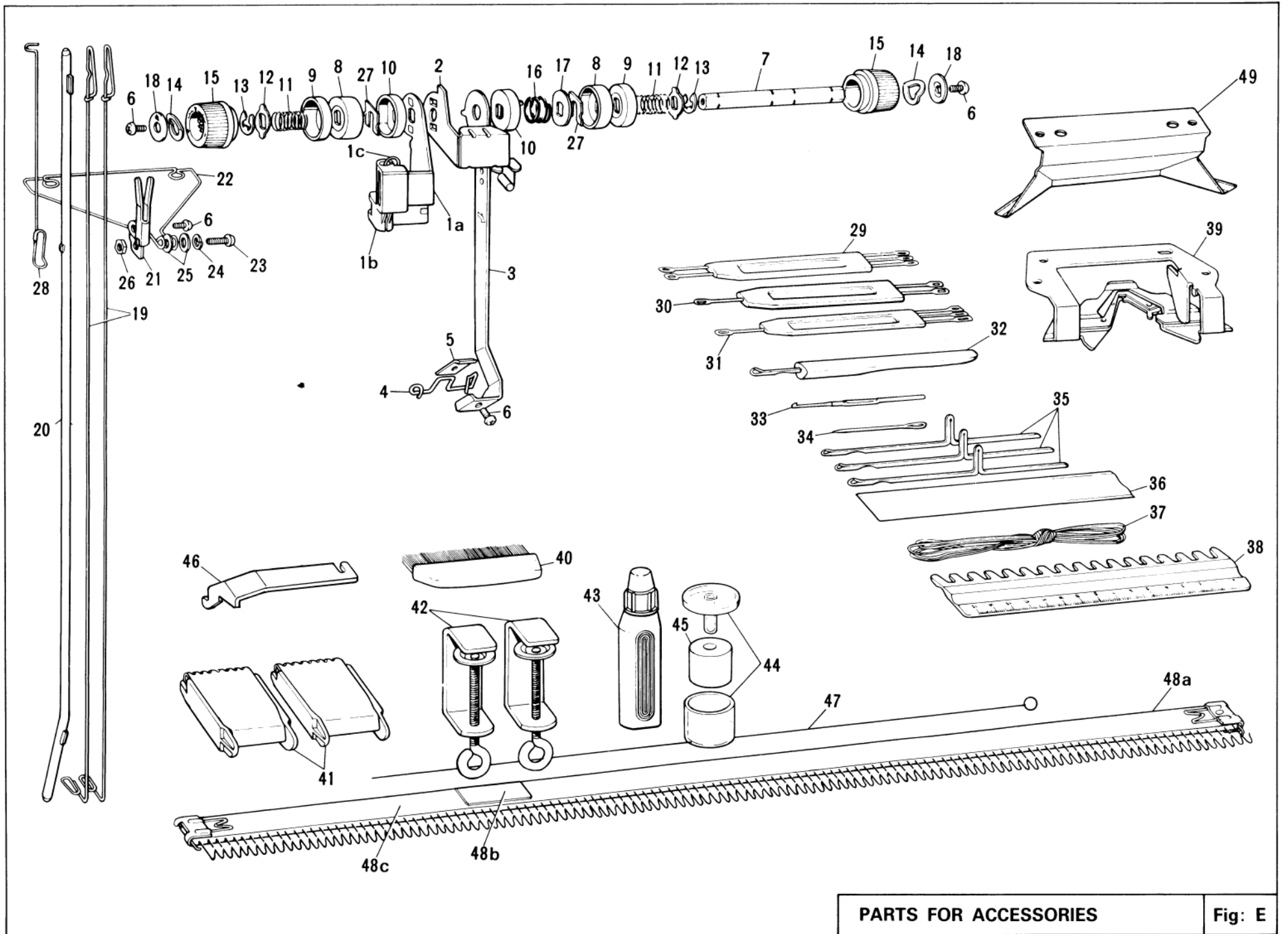


PARTS FOR CARRYING CASE

Fig: D

PARTS FOR CARRYING CASE

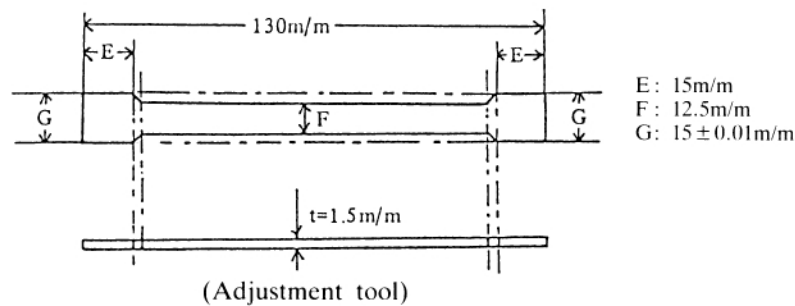
Ref. No.	Parts No.	Description	Revised	Q'ty	Ref. No.	Parts No.	Description	Revised	Q'ty
100	410831001	Power cord (220V)		1					
101	411430001	Power cord (115V) for UL & TAIWAN		1					
	411430001	Power cord (115V) for CSA		1					
102	410833001	Power cord (240V)		1					
103	410834001	Power cord (240V)		1					
	414581001	Power cord (230V) for NEW ZEALAND		1					
104	410854001	Power cord (220V)		1					



PARTS FOR ACCESSORIES	Fig: E
-----------------------	--------

PARTS FOR ACCESSORIES

Ref. No.	Parts No.	Description	Revised	Q'ty
E- 1-28	412183002	Yarn tension unit assembly		1
19	404755001	Take-up spring		2
28	408614001	Sub take-up spring		1
29	402631005	2 × 3 Transfer tool		1
30	402576005	1 × 2 Transfer tool		1
31	402575005	1 × 3 Transfer tool		1
32	407458004	Latch tool		1
33	414979001	Crochet		1
34	402714001	Tapestry needle		1
35	407113001	Plain needle		3
36	407483000	Spare needle case		1
37	402389001	Cast-on thread		1
38	407482004	1/1 Needle pusher		1
39	410971001	Plating yarn feeder assembly		1
40	403552004	Hand brush		1
41	404883006	Claw weight		2
42	409198001	Table clamp		2
43	405135004	Knitting machine oil		1
44-45	487221001	Yarn wax with case		1
46	409756001	Carriage lock		1
48a-c	412878001	Cast-on comb assembly		1
48a	412879001	Cast-on comb, long		1
48b	411365000	Connecting plate		1
48c	412881001	Cast-on comb, short		1
49	414350000	Latch opening plate		1



E: 15m/m
 F: 12.5m/m
 G: 15 ± 0.01m/m

* How to adjust the Mounting dimension of the Main cam

Mount the Main cam (Ref. No. F-9a) or Main cam and the Rear foot (Ref. No. F-9b) on the L carriage plate so that the dimension Ⓐ (between both inner faces of cam) are within range of 45.2m/m ± 0.1m/m, according to the following steps. (refer to Fig. 2)

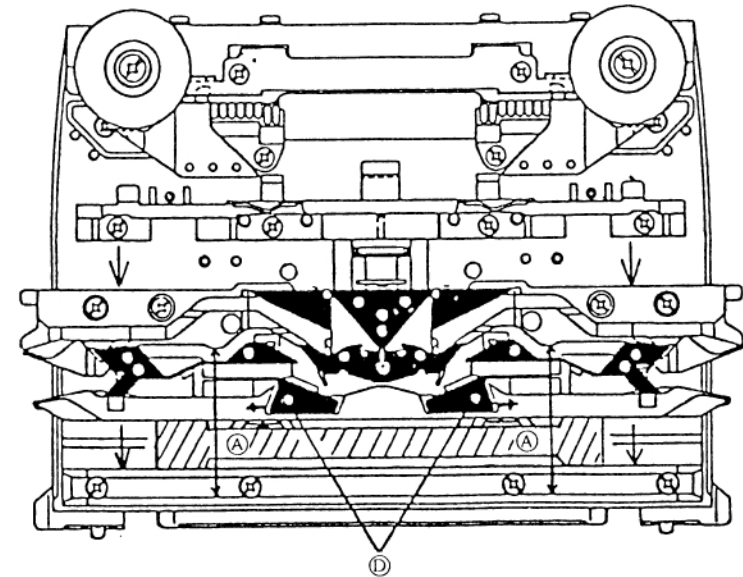
(1) Tighten the Rear foot with 4 screws, while pushing it toward the "arrow" direction. (Also in case of replacing Rear foot.)

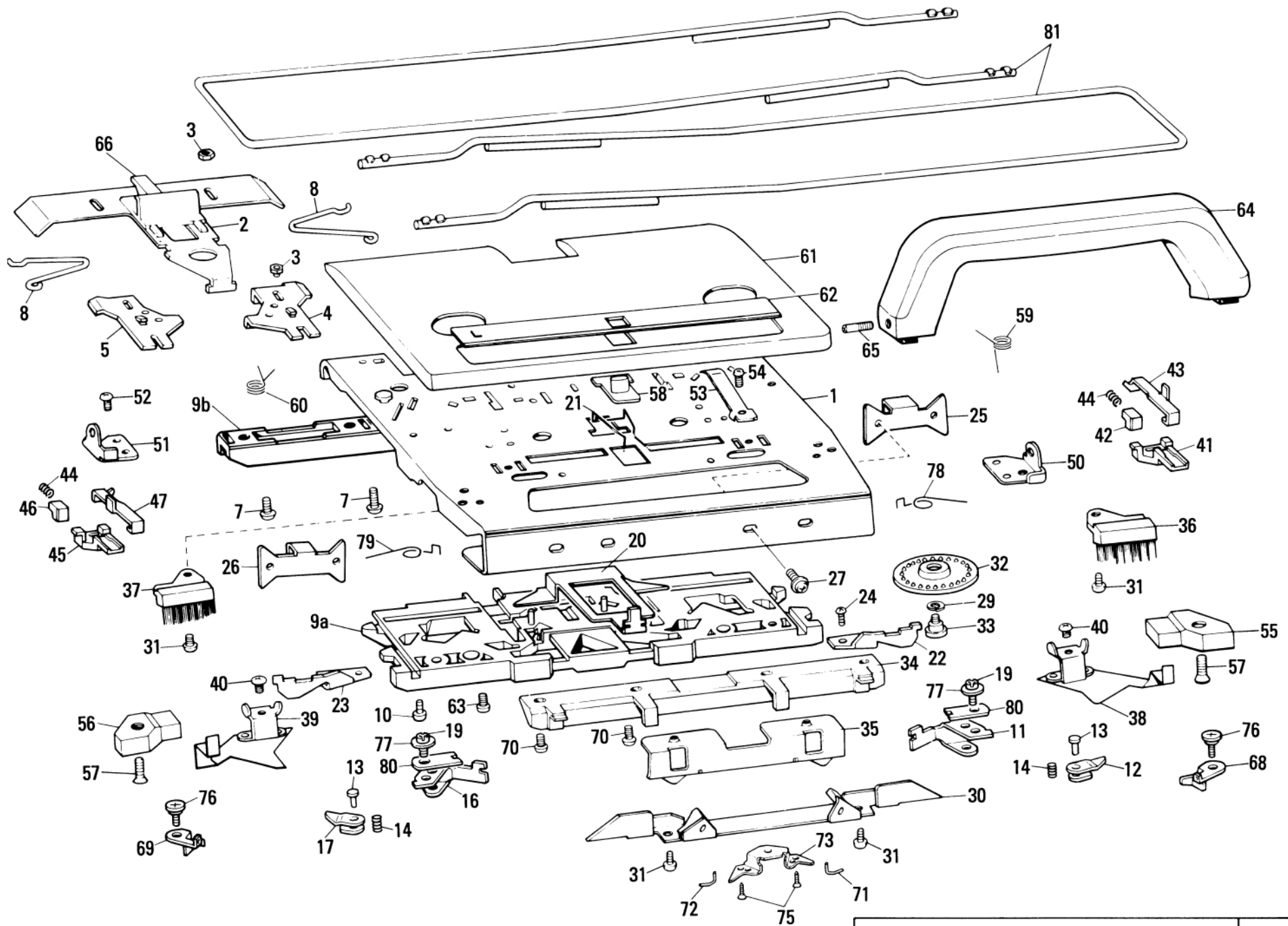
(2) If you made the adjustment tool as shown in Fig. 2, you can adjust the dimension Ⓐ easily.

And place the adjustment tool between the rear foot and the Main cam, then tighten the Main cam with two screws, while pushing it toward the "arrow" direction.

* Although you will not use the adjustment tool, you can adjust the dimension Ⓐ with a calipers, the way of adjustment is that put the calipers on the place of dimension Ⓐ then tighten the main cam with two screws, while pushing it toward the "arrow" direction.

(3) Attach the end needle separation cams Ⓓ while pushing them toward the "arrow" direction.





PARTS FOR L-CARRIAGE

Fig: F

PARTS FOR L-CARRIAGE

Ref. No.	Parts No.	Description	Revised	Q'ty	Ref. No.	Parts No.	Description	Revised	Q'ty
○ F- 1-80	416145001	L carriage assembly KH940		1	54	060660406	Screw 3.57 – 40 × 4		2
1	410481001	L carriage plate		1	55	407454000	Magnet, R		1
2	410483001	Release button plate		1	56	407578000	Magnet, L		1
3	408166001	Stud for release button plate		4	57	417596001	Screw 3.18 – 40 × 10		2
4	410484001	Connecting plate R for L carriage		1	58	409744005	Lace selecting knob		1
5	410485001	Connecting plate L for L carriage		1	59	412148001	L valve cam C spring, R		1
7	060660706	Screw 3.18 – 40 × 7		4	60	412147001	L valve cam C spring, L		1
8	410486001	Connecting plate spring		2	○ 61-62	416146001	L carriage cover for KH940		1
9a	415702001	Main cam		1	○ 62	416147001	L carriage cover decoration plate for KH940		1
9b	415704000	Rear foot		1	63	060660406	Screw 3.18 – 40 × 4		2
10	060660806	Screw 3.18 – 40 × 8		2	64	409748007	L carriage handle		1
11	410578001	Separation cam R for L carriage		1	65	409751001	Screw		2
12	408132001	Raising cam right for L carriage		1	66	410585005	Release button		1
13	410579001	Shaft for separation cam		1	68	412145001	L valve cam C, R		1
14	408134001	Raising cam spring		2	69	412146001	L valve cam C, L		1
16	410581001	Separation cam L for L carriage		1	70	060660806	Screw 3.18 – 40 × 8		4
17	408137001	Raising cam left for L carriage		1	71	412141001	L valve cam B, R		1
19	060660706	Screw 3.18 – 40 × 7		2	72	412142001	L valve cam B, L		1
20	408582001	Lace selecting cam		1	73	412143001	Reinforcing Plate B		1
21	408583001	Change lever spring		1	75	040210812	Screw 2 × 8		2
22	410583001	Right end needle separation cam for L		1	76	409528001	Lever shaft		2
23	410584001	Left end needle separation cam for L		1	77	403069001	Washer 3.3		2
24	410592001	← Screw 3.18 × 11.6		2	78	410966001	R end needle selection change spring		1
25	410494001	Needle transfer plate R		1	79	410967001	L end needle selection change spring		1
26	410495001	Needle transfer plate L		1	80	412898000	Separation cam plate		2
27	413734001	Screw 3.18 – 40 × 4		4	81	412205002	Extension rail		2
29	028030243	Spring washer		2					
30	408573101	Cam plate		1					
31	060660406	Screw 3.18 – 40 × 4		4					
32	411003001	Wheel brush		2					
33	405029001	Stud Screw		2					
34	407490000	Front foot		1					
35	418451000	Front foot holder		1					
36	408580004	Small brush, R		1					
37	408581004	Small brush, L		1					
38	408561001	Spring plate, R		1					
39	408562001	Spring plate, L		1					
40	060660406	Screw 3.18 – 40 × 4		2					
41	410957002	R end needle selection cam for L		1					
42	410959001	R end needle selection change cam for L		1					
43	410958001	R end needle selection plate for L		1					
44	410963001	End needle selection cam spring for L		2					
45	410960002	L end needle selection cam for L		1					
46	410962001	L end needle selection change cam for L		1					
47	410961001	L end needle selection plate for L		1					
50	409740001	Handle setting base, R		1					
51	409739001	Handle setting base, L		1					
52	060670506	Screw 3.57 – 40 × 5		2					
53	407522001	Handle lock spring		2					

* When exchange the Main cam (Ref. No. F-9a) into new one.
Please refer to how to adjust the Mounting dimension of the Main cam on P.16