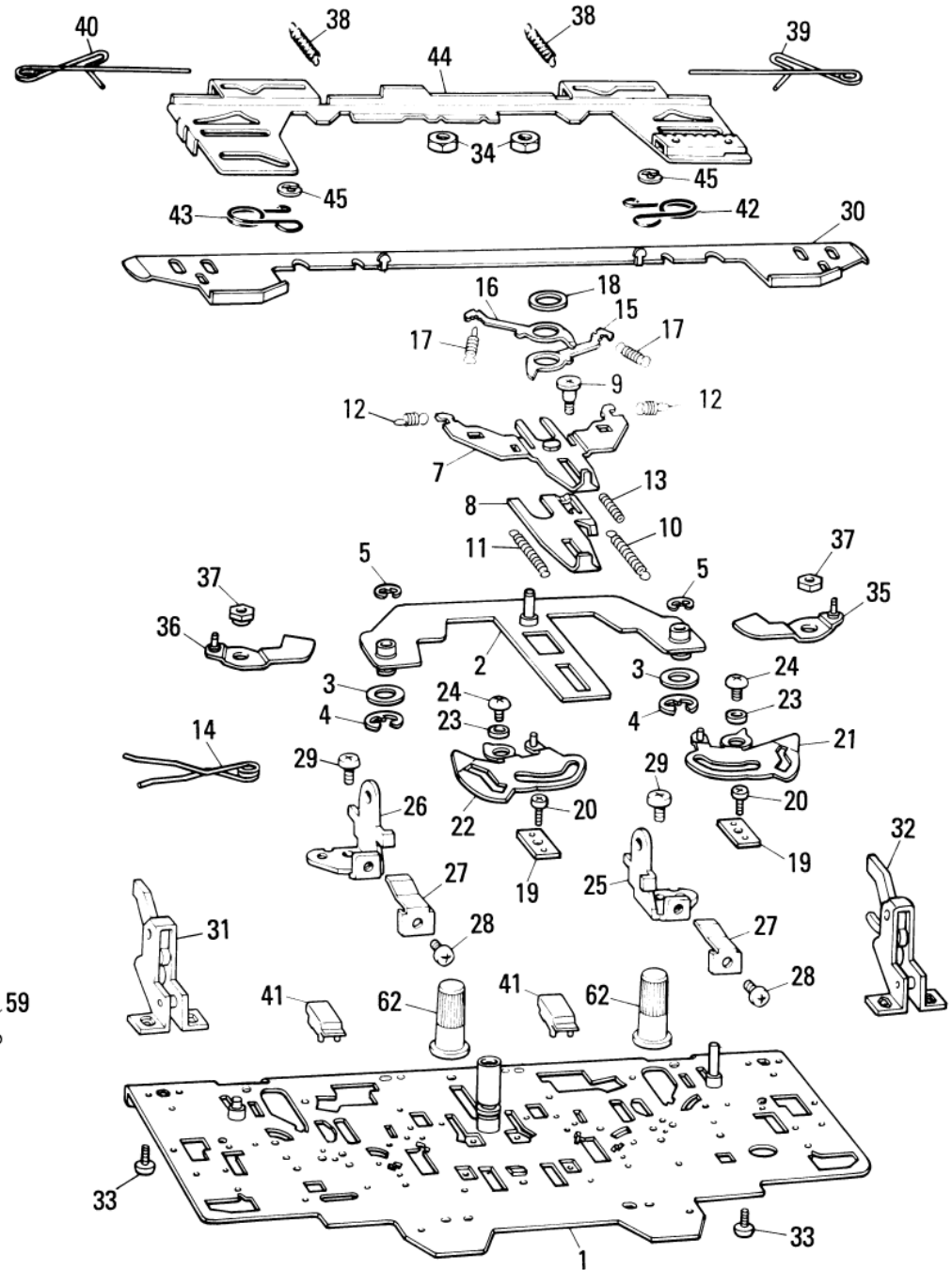
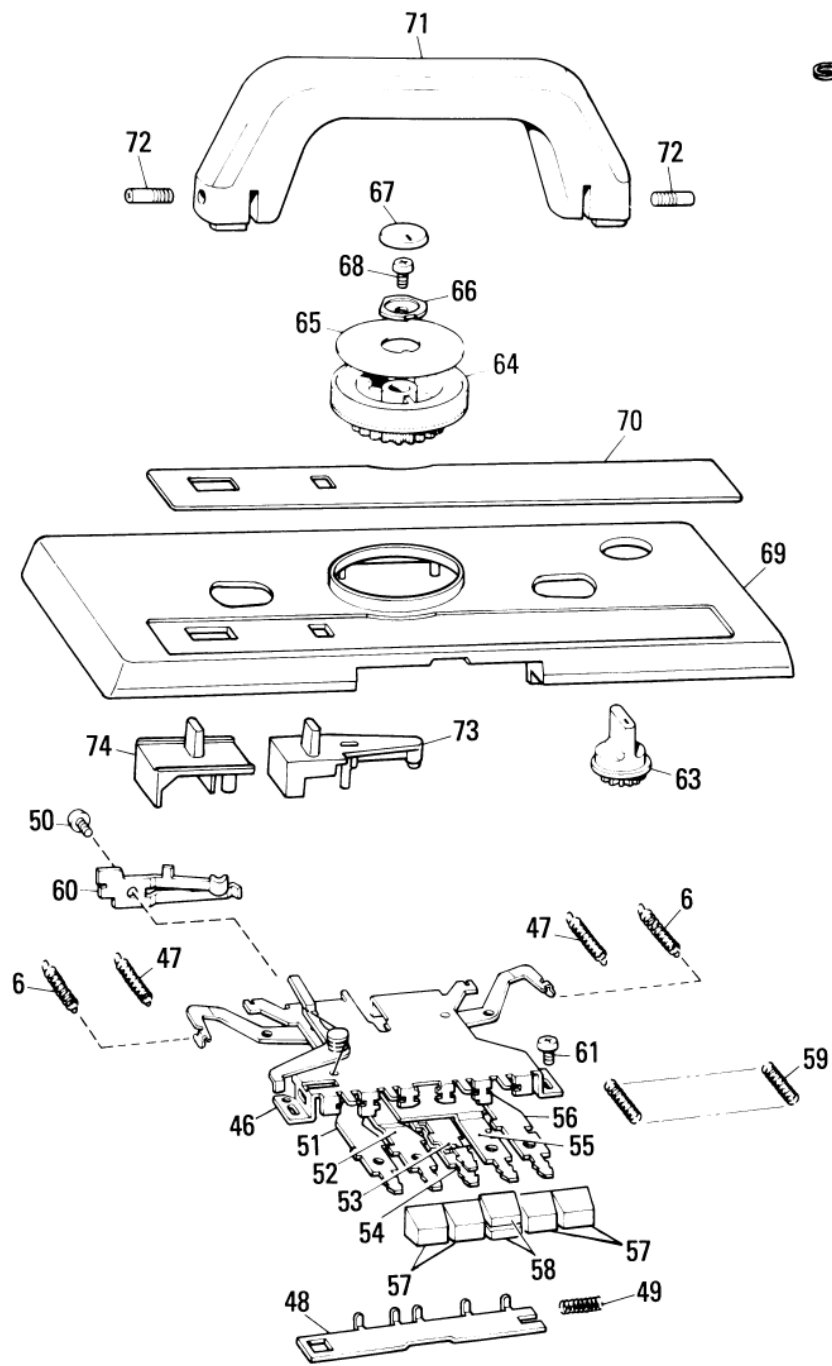


Brother

KH270

CATALOGO PARTI DI RICAMBIO

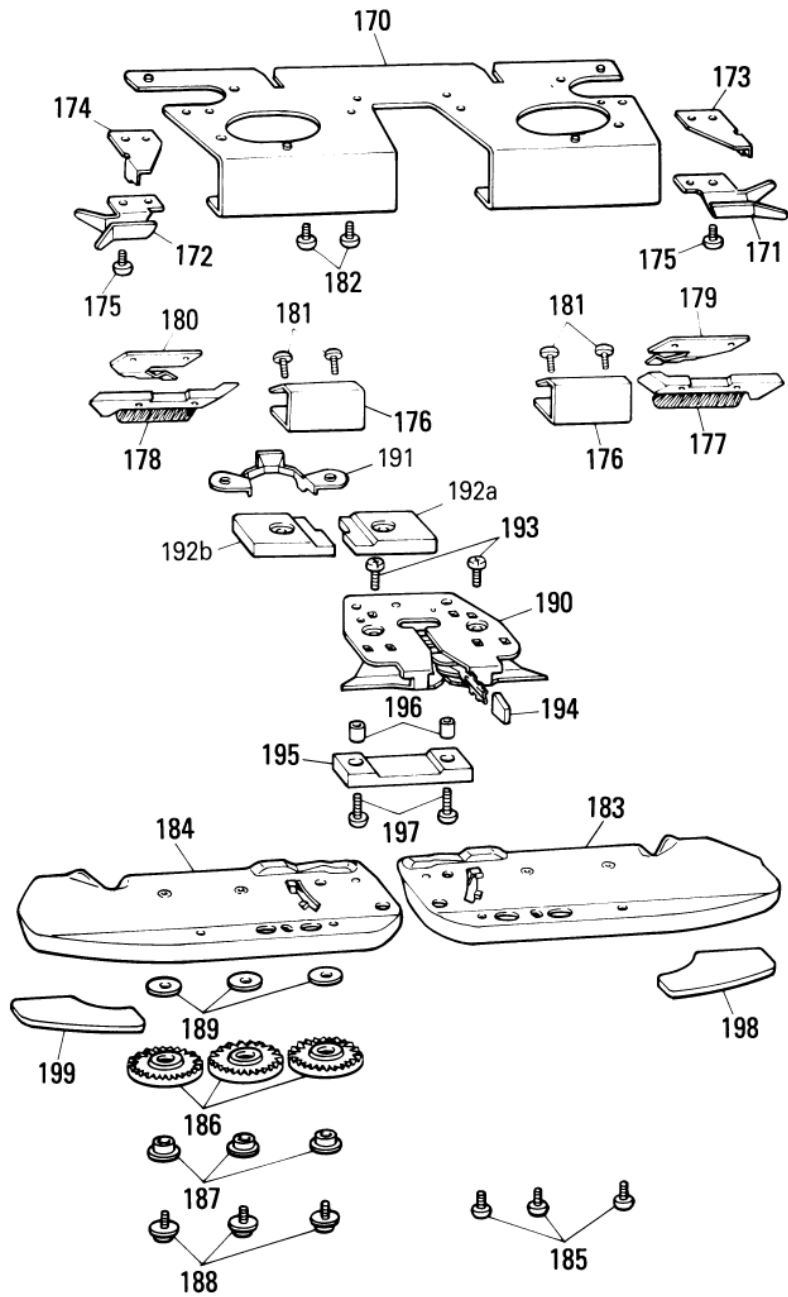
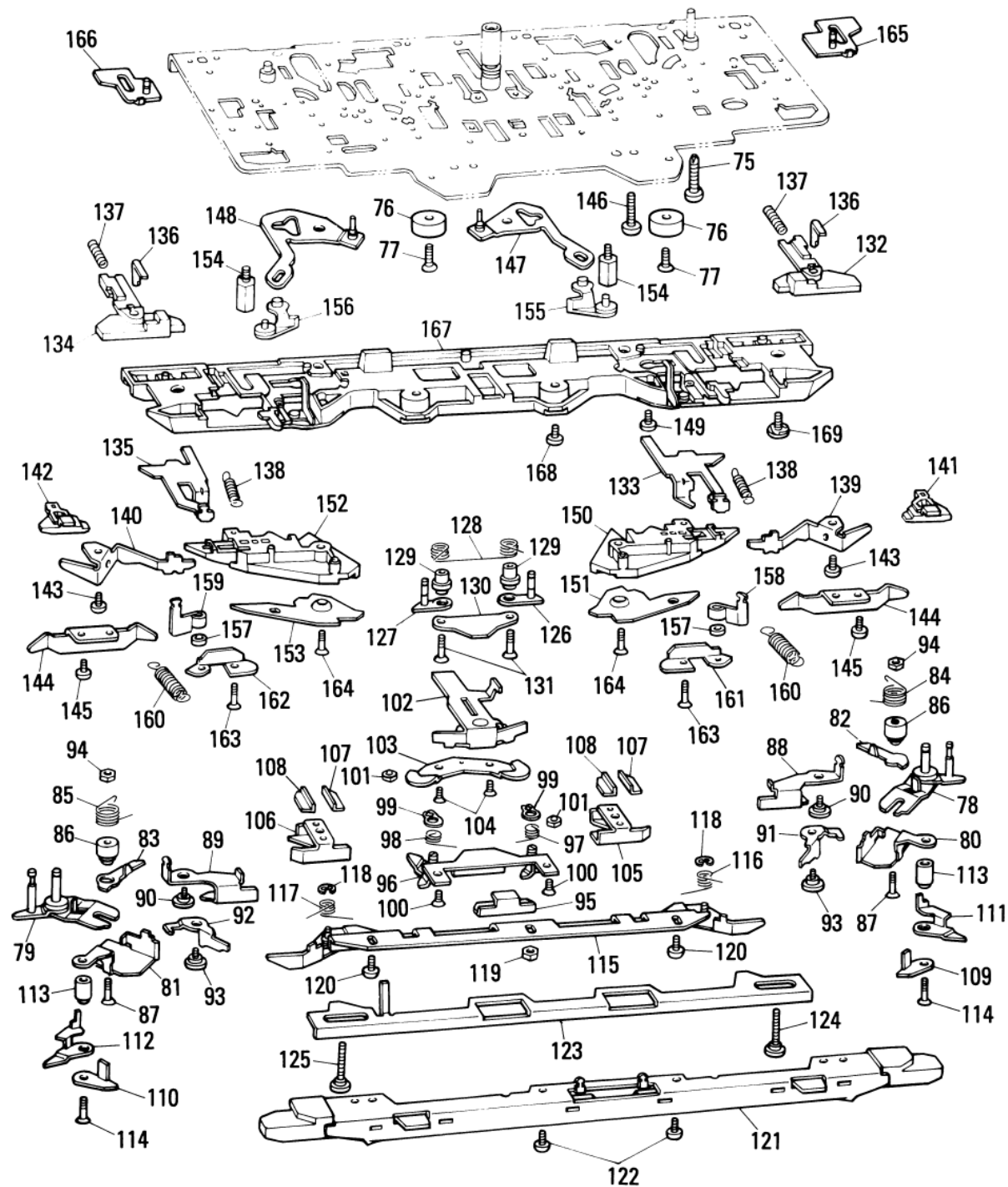


PARTS FOR CARRIAGE UPPER PART

Ref. No.	Parts No.	Description	Revised	Q'ty	Ref. No.	Parts No.	Description	Revised	Q'ty
○ AI- 1-74	417334001	K carriage complete set KH-270		1	48	413545001	Stopper plate		1
○ AII75-199					49	405524001	Stopper spring		1
○ AI- 1	417335001	Carriage plate		1	50	060660506	+—Screw 3.18—40 × 5		1
2	413257001	Stitch cam guide plate		1	51	407351001	Tuck plate, L		1
3	405483001	Washer		2	52	409594001	Tuck plate, R		1
4	048070346	Snap ring 7		2	53	413377001	MC plate		1
5	048030346	Snap ring 3		2	54	413378001	L plate		1
6	407432001	Raising cam change spring		1	55	407354001	Part plate, L		1
7	413305001	Change plate A		1	56	407355001	Part plate, R		1
8	413307000	Change plate B		1	57	405302007	Push button		4
9	413308001	Change plate guide collar		1	58	413379002	Push button A		2
10	413309001	Change plate A spring		1	59	403008001	Push button release spring		4
11	407318001	Change plate spring		1	60	413380001	Stitch dial notch spring		1
12	413559001	MC cam spring		2	61	060670406	+—Screw 3.57 × 4		2
13	413452001	Change plate B spring		1	62	409596003	Thumb nut		2
14	407333001	H.C.L. spring		1	○ 63	409597008	Change knob		1
15	413314001	Tuck cam operating plate, right		1	○ 64-65	413580004	Stitch dial assembly		1
16	413315001	Tuck cam operating plate, left		1	64	413382001	Stitch dial		1
17	407342001	Tuck cam spring		2	○ 65	413581004	Stitch dial indicator plate		1
18	413316001	Presser ring		1	66	406283001	Stitch dial presser		1
19	413280001	Push-up cam side plate		2	○ 67	409601007	Stitch dial cap		1
20	413281001	Screw		2	68	060660606	Screw 3.18 — 40 × 6		1
21	413367001	Push-up change plate, right		1	○ 69-70	417342001	K carriage cover assembly KH-270		1
22	413370001	Push-up change plate, left		1	○ 69	417343001	K carriage cover		1
23	413544001	Collar 3.2		2	○ 70	417499001	K carriage cover decoration plate KH-270		1
24	413554001	Screw 3.18 × 3		2	71	409605007	K carriage handle		1
25	413599001	Handle setting base, right		1	72	409608001	Screw		2
26	413600001	Handle setting base, left		1	73	413437001	Plain lever knob		1
27	409522001	Handle lock spring		2	74	413387001	H.C.L. knob		1
28	060670406	+—Screw 3.57 × 4		2					
29	060680506	+—Screw 4.37 × 5		2					
30	413354001	Rear plate		1					
○ 31	410132101	Knit-leader tripper assembly		1					
○ 32	417336001	Row counter tripper assembly		1					
33	060660406	+—Screw 3.18 × 4		4					
34	021670306	Nut 3.57 — 40		2					
35	413357001	Cam change plate, right		1					
36	413359001	Cam change plate, left		1					
37	413361001	Nut		2					
38	409585001	Needle selection change lever spring		2					
39	413362001	Valve cam E spring, right		1					
40	413363001	Valve cam E spring, left		1					
○ 41	417338001	Magnet holder assembly		2					
42	409543001	Connecting plate spring, right		1					
43	409544001	Connecting plate spring, left		1					
44	417340001	Upper slide plate assembly		1					
45	048040346	Snap ring 4		2					
46-60	413372003	Cam button unit		1					
46	413373001	Cam button unit body		1					
47	407512001	Raising cam spring		2					

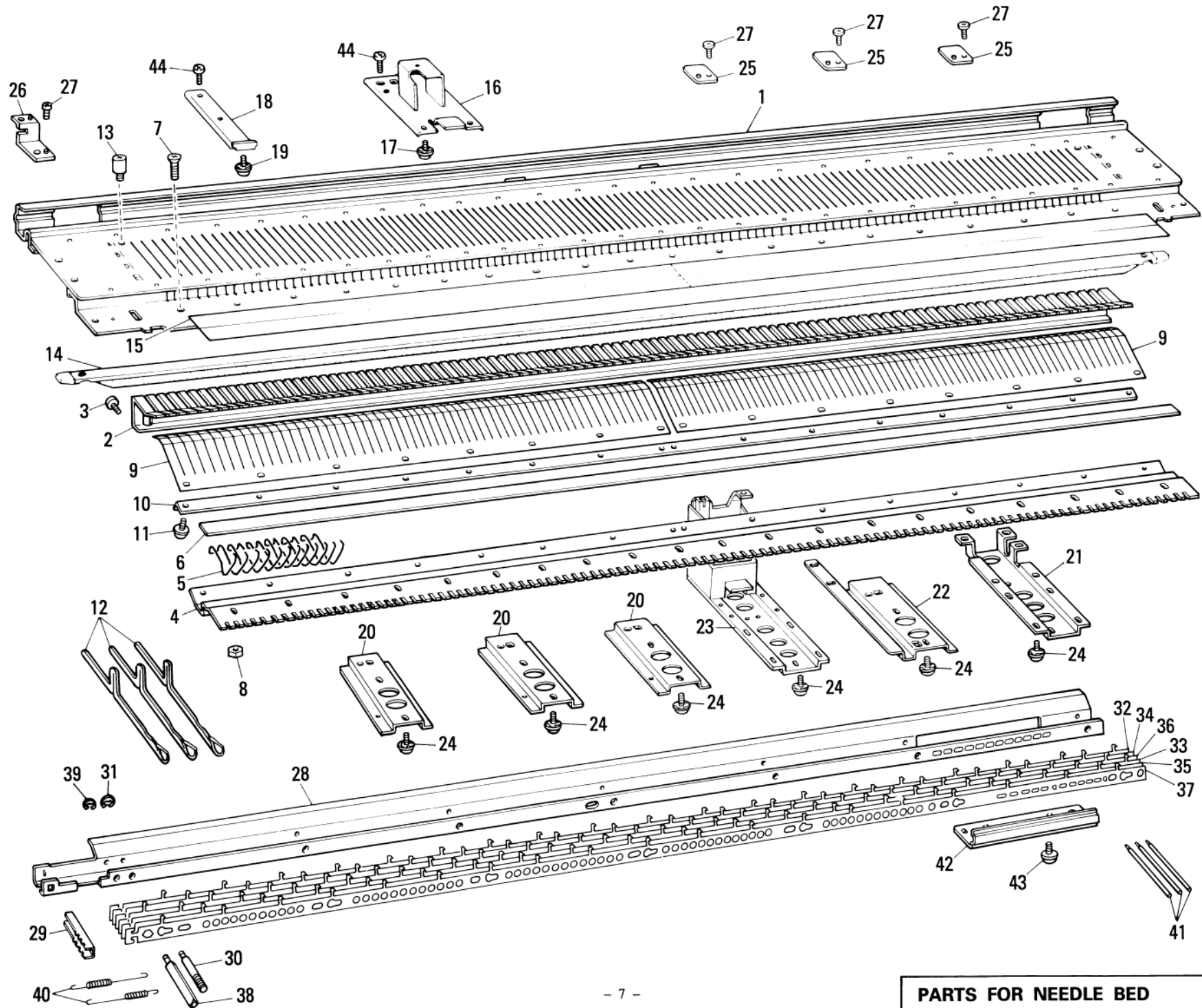
PARTS FOR CARRIAGE LOWER PART

Ref. No.	Parts No.	Description	Revised	Q'ty	Ref. No.	Parts No.	Description	Revised	Q'ty
AII-75	037351615	Tapping screw 3.5 × 16		2	123	407328000	Front side plate		1
76	407285000	Carriage magnet 16		2	124	408504001	Stud screw 3.18		1
77	408773006	Flat head screw 3.18 × 9		2	125	408505001	Stud screw 3.18		1
78	413259001	Stitch cam assembly, right		1	126	407579001	Tuck cam, right		1
79	413264001	Stitch cam assembly, left		1	127	407586001	Tuck cam, left		1
80	413268001	Sub stitch cam, right		1	128	413312001	Tuck cam spring		2
81	413269001	Sub stitch cam, left		1	129	407339001	Shaft for tuck cam		1
82	413270001	Valve cam D, right		1	130	413313001	Tuck cam plate		2
83	413271001	Valve cam D, left		1	131	407299001	Screw		1
84	413272001	Valve cam D spring, right		1	132	413317001	Selection cam for right end needle		1
85	413273001	Valve cam D spring, left		2	133	413318001	Selection guide for right end needle		1
86	413274001	Sub stitch cam shaft		2	134	413319001	Selection cam for left end needle		1
87	413557001	Screw		1	135	413320001	Selection guide for left end needle		2
88	413275001	MC cam, right		1	136	413321001	End needle selection switch cam		2
89	413276001	MC cam, left		2	137	414244001	End needle selection cam spring		2
90	413626001	Screw 3.18 × 3		1	138	413556001	End needle selection spring		1
91	413282001	Valve cam A, right		1	139	413322001	Separation cam, right		1
92	413283001	Valve cam A, left		2	140	413323001	Separation cam, left		1
93	413277001	Stud screw 3.18		2	141	413447000	Buffer right for selected needle		1
94	413555001	Nut 3.18		1	142	413448000	Buffer left for selected needle		2
95	413298001	Slide cam		1	143	060660406	+ Screw 3.18 × 4		2
96-99	413550001	Slide guide cam assembly		1	144	409519001	Guide cam F		2
96	413290001	Slide guide cam		1	145	062660406	+ Screw 3.18 × 4		2
97	413295001	Valve cam B spring, right		1	146	062681206	+ Screw 4.37 × 12		1
98	413296001	Valve cam B spring, left		2	147	413324001	Needle selection change plate, right		1
99	048040142	Snap ring 4		2	148	413326001	Needle selection change plate, left		2
100	417175001	Flat head screw 3.18 × 7		2	149	409528001	Stud screw		1
101	021660306	Nut 3.18 - 40		1	150	413328001	Selection cam plate, right		1
102	413449001	Thread-lace change plate		1	151	413330001	Selection cam guide plate, right		1
103	413451001	Fastening plate for thread-lace change plate		2	152	413331001	Selection cam plate, left		1
104	413285001	+ Screw 3.18 × 4		1	153	413333001	Selection cam guide plate, left		2
105	413278001	Push-up cam, right		1	154	413334001	Shaft		1
106	413279001	Push-up cam, left		2	155	413335001	Needle selection change cam, right		1
107	413627001	Push-up cam holder plate, right		2	156	413337001	Needle selection change cam, left		2
108	413628001	Push-up cam holder plate, left		1	157	414205001	Needle selection change spacer		1
109	413299001	MC guide cam, right		1	158	414203001	Valve cam F, right		2
110	413300001	MC guide cam, left		1	159	414204001	Valve cam F, left		1
111	413301001	MC guide change cam, right		1	160	413643001	Valve cam F, spring		1
112	413302001	MC guide change cam, left		2	161	414201001	Guide cam G, right		1
113	413304001	Shaft		2	162	414202001	Guide cam G, left		2
114	407299001	Screw		1	163	407410001	Screw 2.38 × 12		2
115-118	413548001	Guide cam A assembly		1	164	061661206	Flat head screw 3.18 × 12		1
115	413547001	Guide cam A		1	165	413342001	Connecting plate, right		1
116	407325001	Holding cam spring, right		1	166	413344001	Connecting plate, left		1
117	407326001	Holding cam spring, left		2	167	413346001	Rear foot		4
118	048030346	Snap ring 3		1	168	060660406	+ Screw 3.18 × 4		2
119	408524001	Nut 3.18		2	169	409494001	Screw 3.57		1
120	408305002	Screw 3.18 × 5		1	170-199	413584002	Sinker plate complete set		1
121	413310001	Front foot		2	170-189	413585001	Sinker plate arm assembly		1
122	408305002	Screw 3.18 × 5			198, 199				



PARTS FOR CARRIAGE LOWER PART

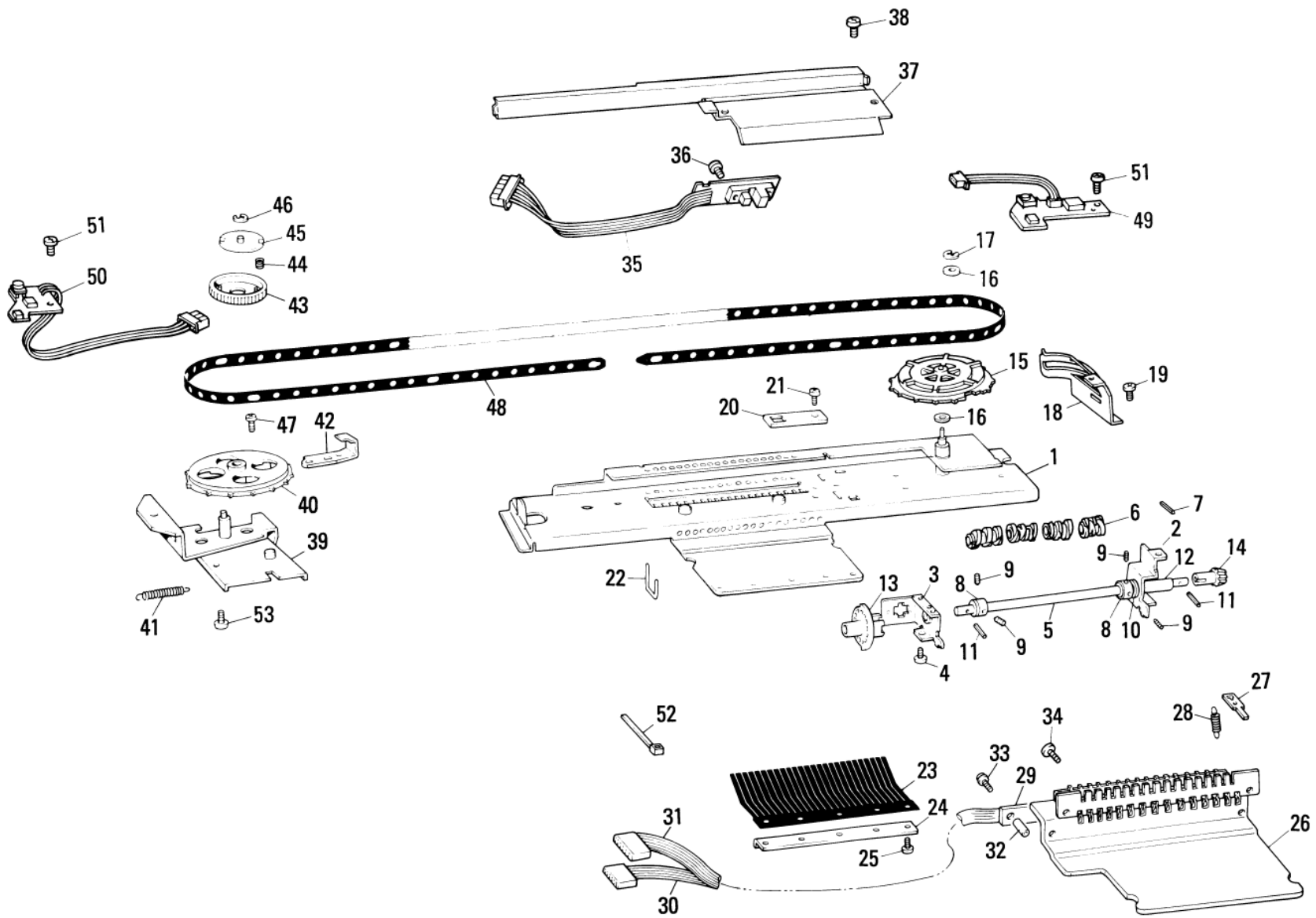
Ref. No.	Parts No.	Description	Revised	Q'ty	Ref. No.	Parts No.	Description	Revised	Q'ty
170	413587001	Sinker plate arm		1					
171	413393000	Waving thread guide, right		1					
172	413394000	Waving thread guide, left		1					
173	413641000	Sub yarn guide, right		1					
174	413642000	sub yarn guide, left		1					
175	412049006	+ Screw 3.18 × 3.5		2					
176	413395000	Brush plate		2					
177	410003001	Latch opening brush, right		1					
178	410004001	Latch opening brush, left		1					
179	413396000	Latch presser plate, right		1					
180	413397000	Latch presser plate, left		1					
181	037280616	Screw 2.6 × 6		4					
182	412049006	+ Screw 3.18 × 3.5		4					
183	413398001	Sinker plate, right		1					
184	413400001	Sinker plate, left		1					
185	412049006	+ Screw 3.18 × 3.5		6					
186-187	413402001	Rubber wheel assembly		6					
186	413403001	Rubber wheel 35		6					
187	410970001	Holder		6					
188	409621001	+ Screw 3.18 × 4		6					
189	405325001	Washer		6					
190-194	413586001	Double yarn feeder assembly		1					
190	413588001	Double yarn feeder		1					
191	413408000	Magnet holder plate		1					
192a	413409000	Magnet, right		1					
192b	413410000	Magnet, left		1					
193	062630606	Fastening screw 2.38 × 6		2					
194	407450004	Yarn feeder knob		1					
195	413683000	Magnet		1					
196	413684001	Magnet collar		2					
197	060660806	+ Screw 3.18 × 8		2					
198	413444001	Rubber plate, right		1					
199	413445001	Rubber plate, left		1					



PARTS FOR NEEDLE BED **Fig: B**

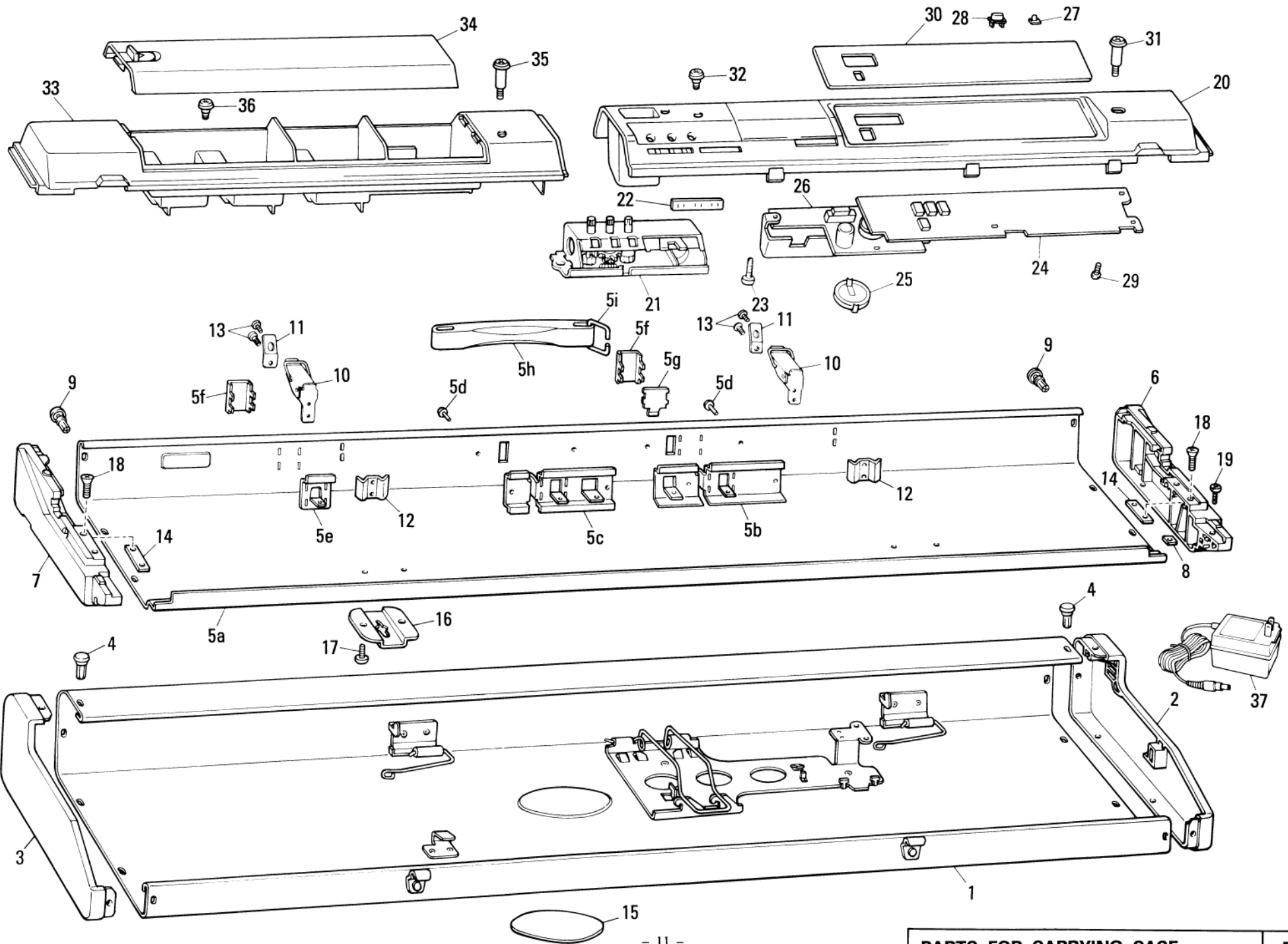
PARTS FOR NEEDLE BED

Ref. No.	Parts No.	Description	Revised	Q'ty	Ref. No.	Parts No.	Description	Revised	Q'ty
○ B-	1	413416101		1					
	2	413421000		1					
	3	060660506		11					
○	4	413422100		1					
	5	413423001		58					
	6	413639001		1					
	7	061660806		20					
	8	021660206		20					
	9	413424001		2					
	10	413425000		1					
	11	410072001		16					
	12	413426001		114					
	13	413436001		2					
	14	413427002		1					
○	15	417346001		1					
	16	407565001		1					
	17	409197001		2					
	18	407116000		1					
	19	409197001		1					
	20	413433000		3					
	21	413434000		1					
	22	413435000		1					
○	23	417347001		1					
	24	409197001		16					
	25	413952000		3					
	26	410175000		1					
	27	410523001		4					
○	28-40	417362001		1					
○	28-29	417363001		1					
	30	413470001		7					
	31	048025346		7					
○	32	417365001		1					
○	33	417366001		1					
○	34	417367001		1					
○	35	417368001		1					
○	36	417369001		1					
○	37	417370001		1					
	38	408172001		1					
	39	048025346		1					
	40	408086001		6					
	41	413630001		12					
○	42	417371001		1					
	43	409197001		9					
	44	060660406		5					



PARTS FOR NEEDLE SELECTOR UNIT

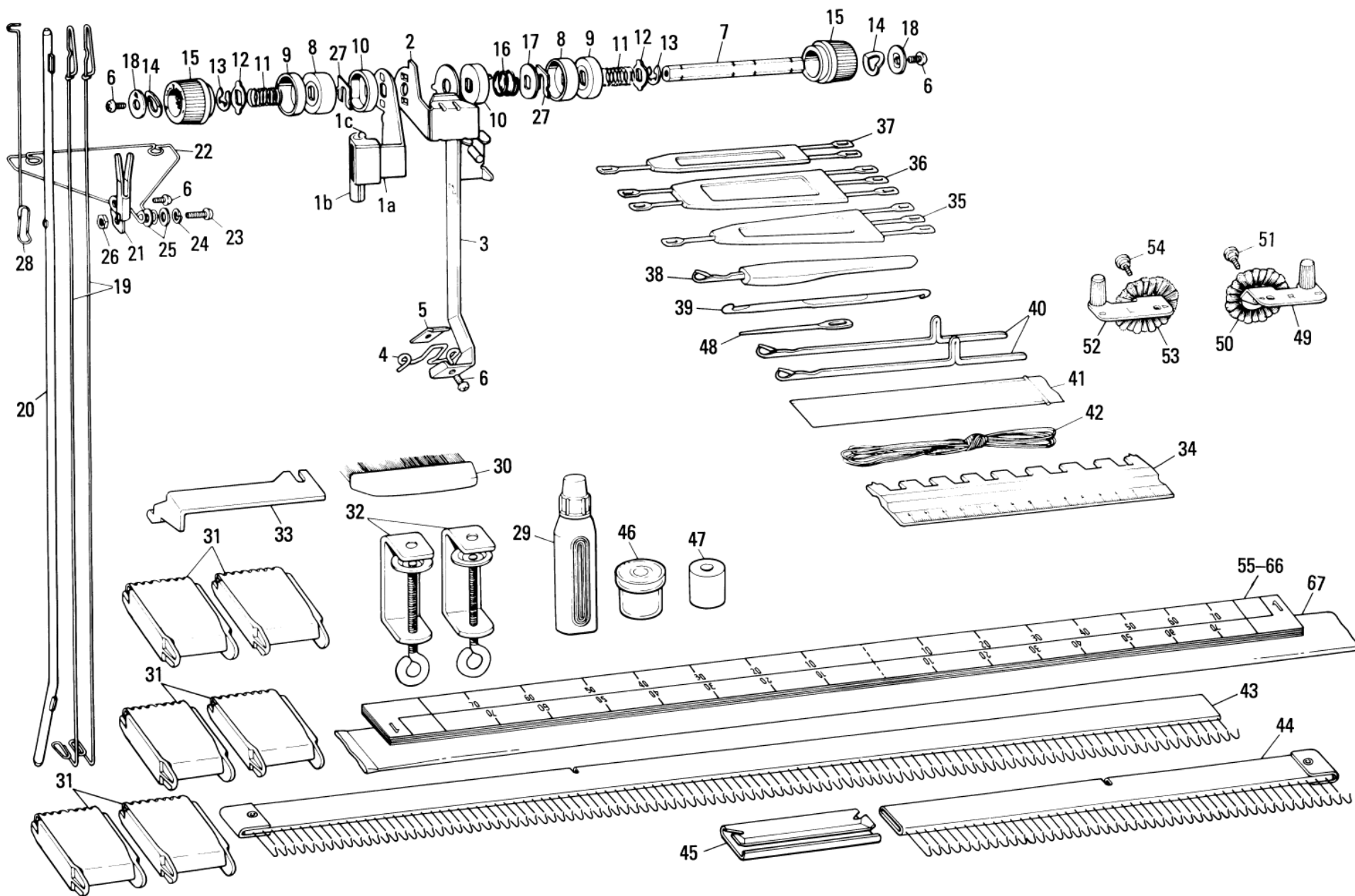
Ref. No.	Parts No.	Description	Revised	Q'ty	Ref. No.	Parts No.	Description	Revised	Q'ty
○ C- 1-34	417349001	Rotary cam holder body assembly		1	47	406397001	Screw with washer 3.18 × 5		2
○ 1	417350001	Rotary cam holder body		1	48	417360001	Timing belt		1
○ 2	417283001	Rotary cam holder, right		1	49	417033001	Right position sensor P.C.B. assembly		1
○ 3	417286001	Rotary cam holder, left		1	50	417504001	Left position sensor P.C.B. assembly		1
○ 4	409197001	Screw with washer		2	51	060660406	+– Screw 3.18 – 40 × 4		2
○ 5-7	417352001	Rotary cam assembly		1	52	411746001	Cord binder		1
○ 5	417480001	Rotary cam shaft		1	53	409197001	Screw with washer 3.18 × 4		2
○ 6	417481000	Rotary cam		4					
○ 7	047201042	Spring pin AW2		4					
○ 8	410215001	Rotary cam adjustor collar		2					
○ 9	013680516	Stopper screw 4.37 – 40 × 5		4					
○ 10	411013001	Washer 6.3		1					
○ 11	047201042	Spring pin AW2		2					
○ 12	410217001	Spacer 6.2 × 19		1					
○ 13	417353001	Slit disc		1					
○ 14	417354000	Bevel gear Z12		1					
○ 15	417355001	Bevel gear Z32 assembly		1					
○ 16	410223001	Washer 6.3		2					
○ 17	048050346	Snap ring 5		1					
○ 18	416604100	Position sensor board holder plate, R		1					
○ 19	409197001	Screw with washer		2					
○ 20	408068001	Card reader (Cam lever) guide stopper		1					
○ 21	060660406	+– Screw 3.18 – 40 × 4		1					
○ 22	417287001	Rotary cam lever		12					
○ 23	417485001	Rotary cam lever spring		1					
○ 24	401227000	Cam lever spring presser plate		1					
○ 25	060660406	+– Screw 3.18 – 40 × 4		5					
○ 26-33	417357001	Needle selector solenoid assembly		1					
○ 26	417358001	Solenoid yoke assembly		1					
○ 27	417359001	Armature		12					
○ 28	417502001	Spring for armature		12					
○ 29	410327101	Solenoid board		1					
○ 30	417298001	Solenoid cord 1		1					
○ 31	417299001	Solenoid cord 2		1					
○ 32	408481002	Spacer 4 × 7		2					
○ 33	415616001	Screw with washer 3 × 14		2					
○ 34	060670506	+– Screw 3.57 – 40 × 5		2					
○ 35	417556001	Encoder sensor assembly		1					
○ 36	062660806	Screw 3.18 – 40 × 8		2					
○ 37	417292000	Cord cover		1					
○ 38	060660406	Screw 3.18 – 40 × 5		2					
○ 39-47	417533001	Pulley assembly		1					
○ 39	410180001	Pulley holder plate		1					
○ 40	408178002	Pulley		1					
○ 41	410016001	Belt tension control spring		1					
○ 42	412034000	Pulley adjusting plate		1					
○ 43	410477001	Friction plate		1					
○ 44	410479001	Friction plate spring		2					
○ 45	410478000	Presser for friction plate spring		1					
○ 46	048030346	Snap ring 3		1					



PARTS FOR CARRYING CASE **Fig. D**

PARTS FOR CARRYING CASE

Ref. No.	Parts No.	Description	Revised	Q'ty	Ref. No.	Parts No.	Description	Revised	Q'ty
○ D-	1-14	417372001		1	37	416066001	AC Adapter for Knitting Machine (120V, for KK)		1
○	1-4	413479003		1	37	415663001	AC Adapter for Knitting Machine (120V, for CSA)		1
	1	413480001		1	37	416454001	AC Adapter for Knitting Machine (220V)		1
	2	413485003		1					
	3	413486003		1					
	4	408194001		10					
○	5-14	417373001		1					
○	5a-5i	417374001		1					
	6	413491003		1					
	7	413492003		1					
	8	407252001		2					
	9	408194001		6					
	10	404022002		2					
	11	404027001		2					
	12	407115000		2					
	13	405658001		4					
	14	411333001		2					
○	15	417395001		1					
	16	407261001		2					
	17	060660704		4					
	18	407119001		4					
	19	060660704		2					
○	20-30	417531001		1					
○	20-23	417377001		1					
○	20	417693001		1					
	21	410531003		1					
	22	409721003		1					
	23	037351016		2					
○	24	417380001		1					
○	25	417524001		1					
○	26	417384001		1					
○	27	416623003		14					
○	27	416623004		1					
○	27	416623005		1					
○	28	417333002		25					
○	28	417333001		1					
	29	037280816		11					
○	30	417379001		1					
	31	413946001		1					
	32	410535001		1					
○	33-34	417391001		1					
○	33	417392001		1					
○	34	417393001		1					
	35	413946001		1					
	36	410535001		1					
	37	415665001		1					
	37	415655001		1					
	37	415664001		1					
	37	415916001		1					
	37	416225001		1					



PARTS FOR ACCESSORIES

Ref. No.	Parts No.	Description	Revised	Q'ty	Ref. No.	Parts No.	Description	Revised	Q'ty
E- 1-28	413498002	Yarn tension unit assembly		1					
19	412400001	Take up spring		2					
28	413535001	Sub take up spring		1					
29	405135004	Special knitting machine oil		1					
30	403552004	Hand brush		1					
31	404883006	Claw weight		6					
32	409198001	Table clamp		2					
33	413516001	Carriage lock		1					
34	411360002	1/1 needle pusher 9P		1					
35	411355002	1 × 3 transfer tool 9P		1					
36	411356002	2 × 3 transfer tool 9P		1					
37	411354002	1 × 2 transfer tool 9P		1					
38	411357002	Latch tool 9P		1					
39	409212001	Crochet		1					
40	413426001	Plain needle 9P		2					
41	407483000	Spare needle case		1					
42	402389001	Cast-on thread		1					
43-45	413517001	Cast-on comb set 9P		1					
43	413551001	Cast-on comb, long 9P		1					
44	413553001	Cast-on comb, short 9P		1					
45	411365000	Connecting plate for cast-on comb		1					
46-47	487221001	Yarn wax with case		1					
48	409211001	Tapestry needle		1					
49-51	413521001	Brush wheel assembly, right		1					
52-54	413526001	Brush wheel assembly, left		1					
55-67	412150001	Complete scale set 9P		1					