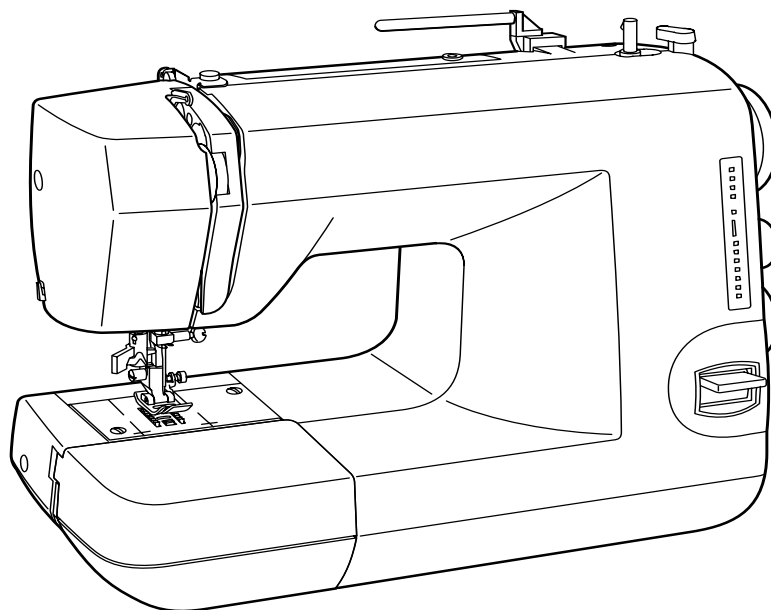


PARTS LIST



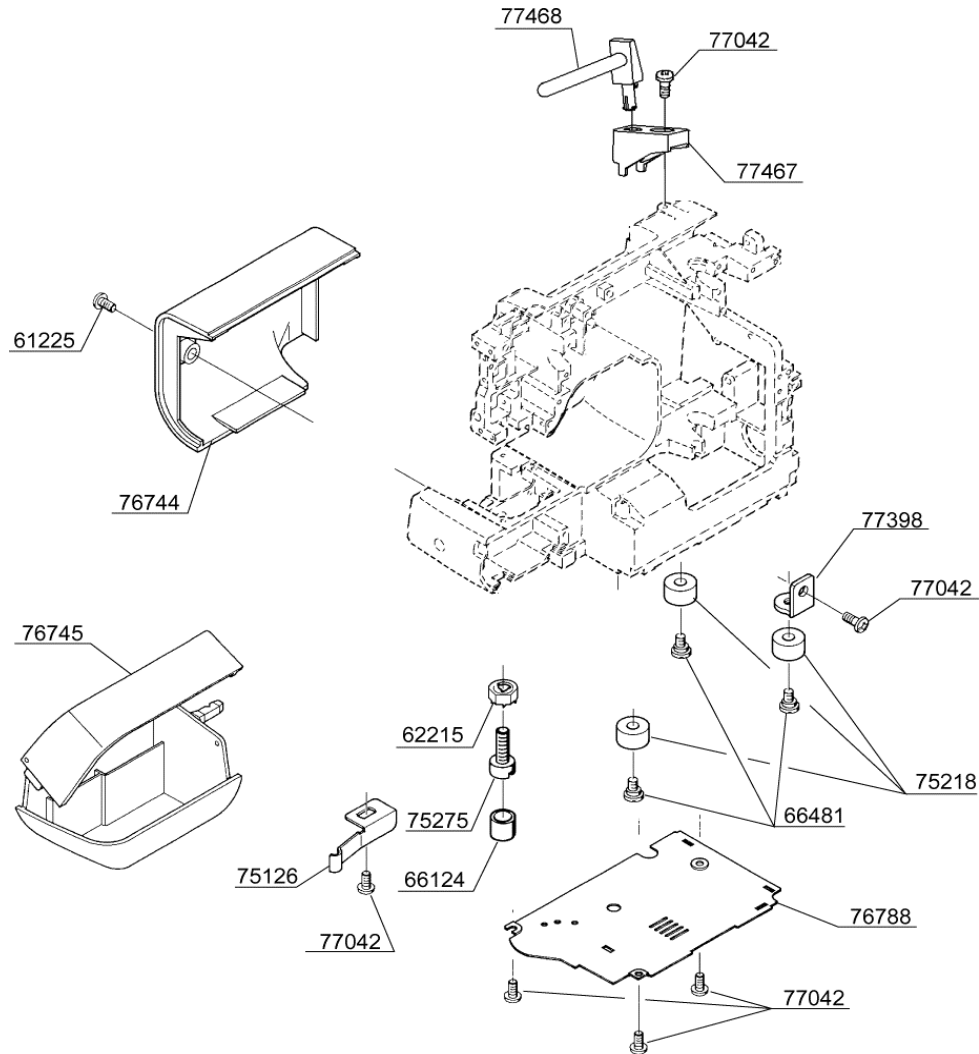
HZL-25Z

JUKI

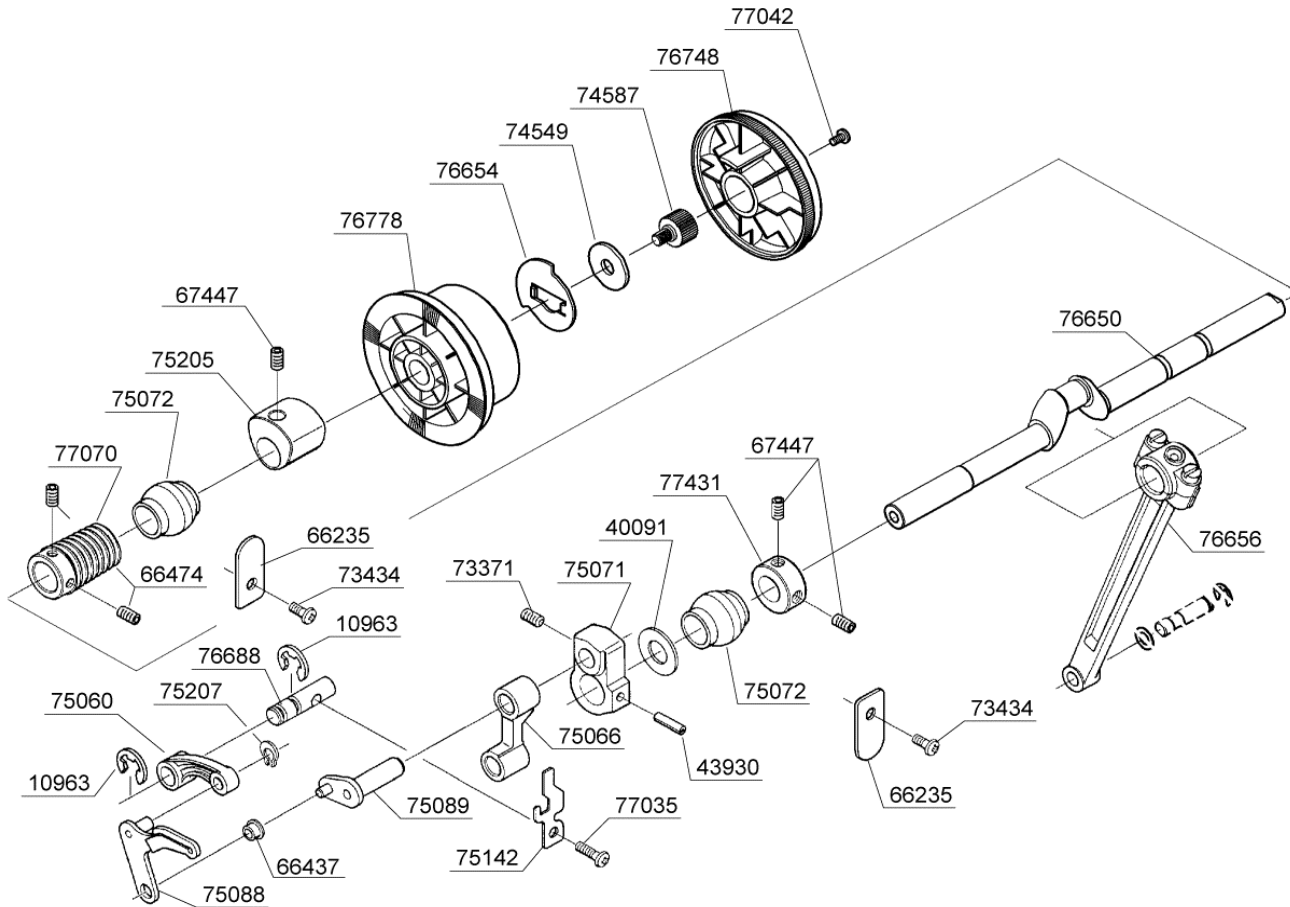
«Remarks»

Please order it in an article number on the occasion of part order.

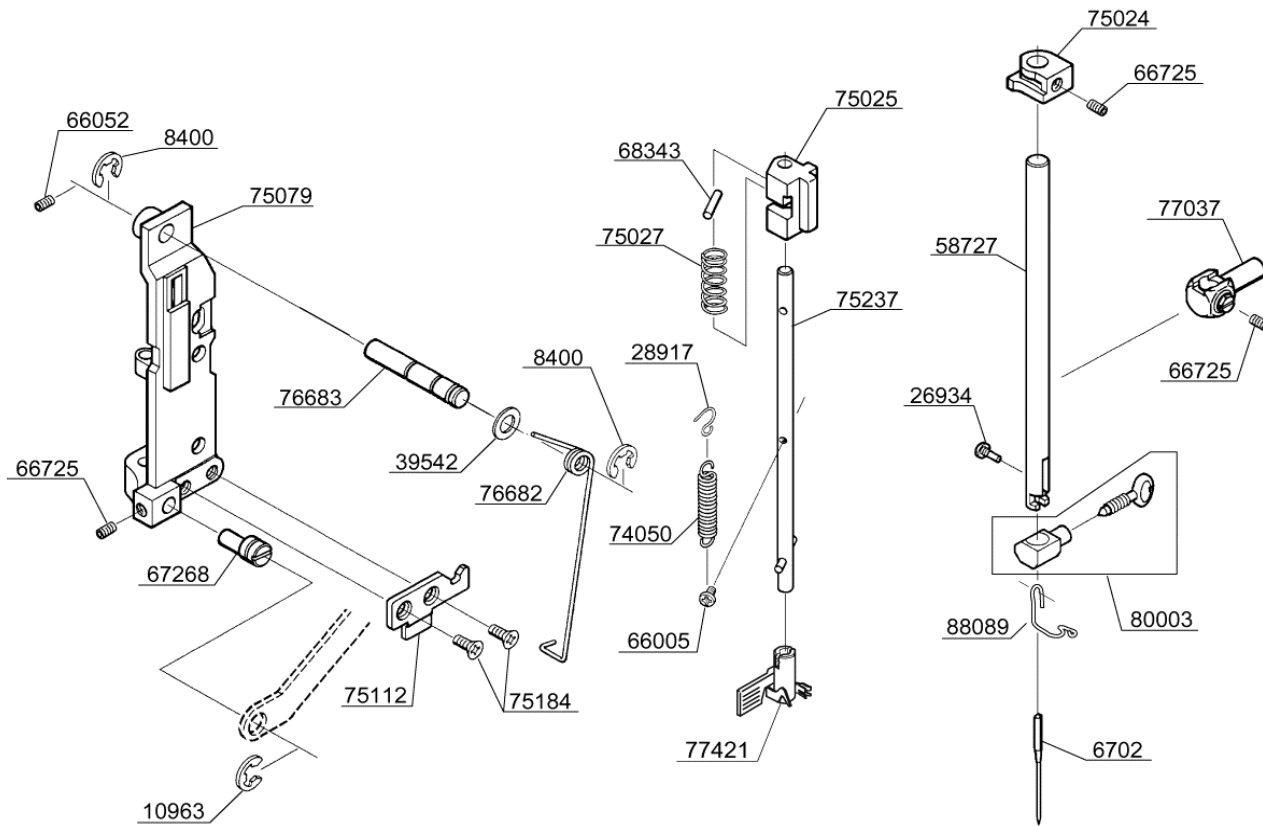
MODEL	HZL-25Z(120V)	HZL-25Z(230V)	PAGE			NO	PARTS NO.	DESCRIPTION
			1			61225	40050752	M4 PHILLIPS SCREW
						62215	40050760	M4 NUT
						66124	40050776	RUBBER FOOT
						75126	40057478	LEAF SPRING
						75218	40059938	RUBBER CUSHION
						75275	40057505	M4 STUD SCREW
						76744	40057549	COVER
						76745	40057550	ACCESSORY BOX COMPLETE
						76788	40059939	BED COVER
						77042	40051066	M4 PHILLIPS SCREW
						77398	40059940	PLATE
						77467	40057566	SPOOL STAND
						77468	40057567	SPOOL PIN



MODEL	HZL-25Z(120V)	HZL-25Z(230V)	PAGE			NO	PARTS NO.	DESCRIPTION
			2			10963	40050712	E6 CLIP-ON-WASHER
						40091	40050724	THRUST WASHER
						43930	40050730	SPRING PIN
						66235	40050777	SECURING PLATE
						66437	40050778	BUSH
						66474	40050779	M5 SCREW
						67447	40050786	M5 SCREW
						73371	40050810	M6 SCREW
						73434	40050811	M4 PHILLIPS SCREW
						74549	40057440	WASHER
						74587	40057441	M6 STUD SCREW
						75060	40050830	TAKE-UP LEVER CRANK
						75066	40057449	NEEDLE BAR CRANK
						75071	40057452	BALANCE CAM
						75072	40050833	BALL BUSHING
						75088	40057460	TAKE-UP LEVER
						75089	40057461	CRANK SHAFT
						75142	40057483	CORD GUIDE
						75205	40057498	FEED REGULATING CAM
						75207	40050847	CS-CLIP
						76650	40057515	MAIN SHAFT
						76654	40057516	WASHER
						76656	40051018	CONNECTING ROD
						76688	40051061	SHAFT
						76748	40057552	HAND WHEEL
						76778	40057553	BELT PULLEY
						77035	40051064	M4 PHILLIP SCREW
						77042	40051066	M4 PHILLIPS SCREW
						77070	40051070	SPIRAL GEAR
						77431	40057564	COLLAR

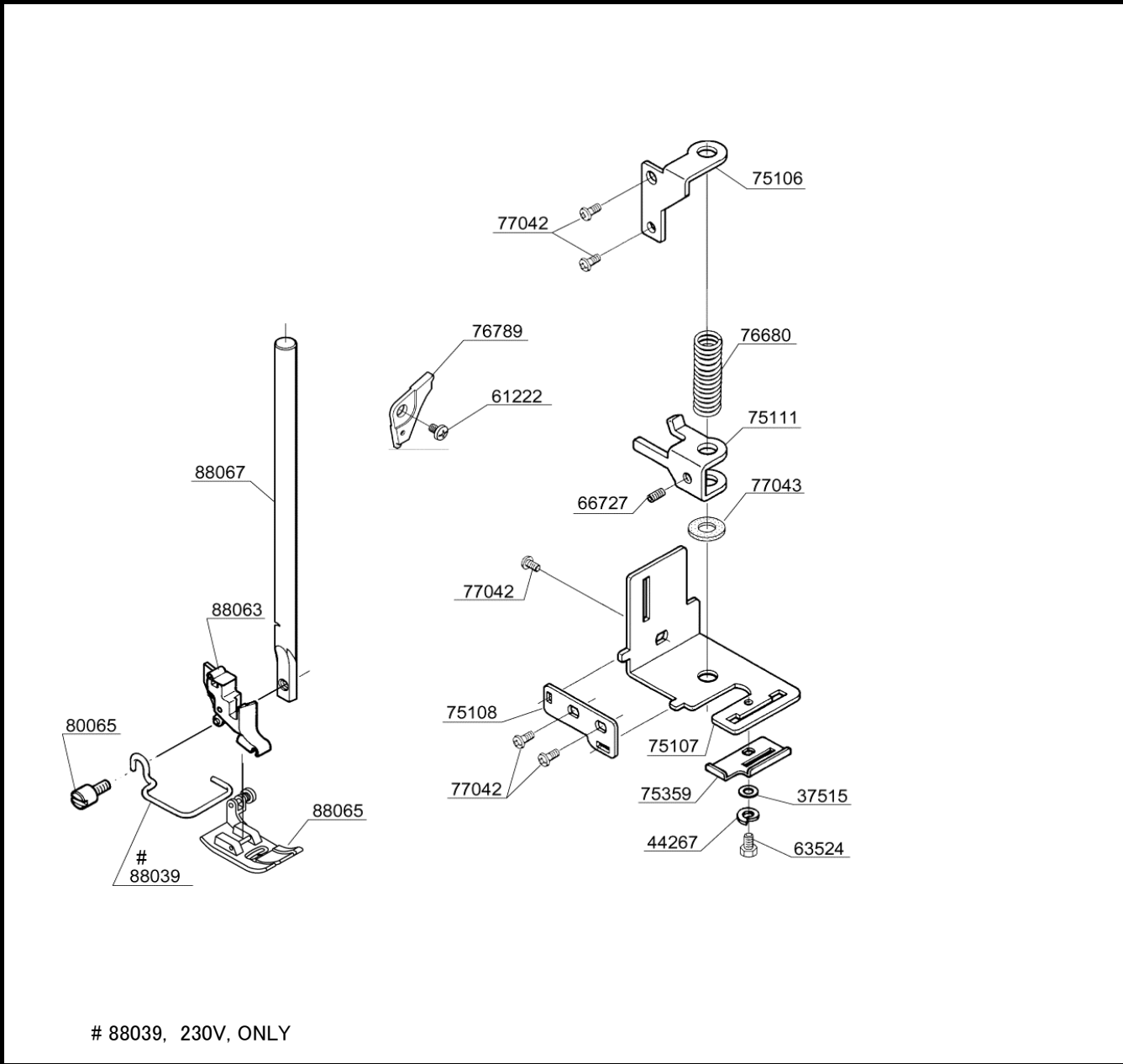


MODEL	HZL-25Z(120V)	HZL-25Z(230V)	PAGE			NO	PARTS NO.	DESCRIPTION
			3					



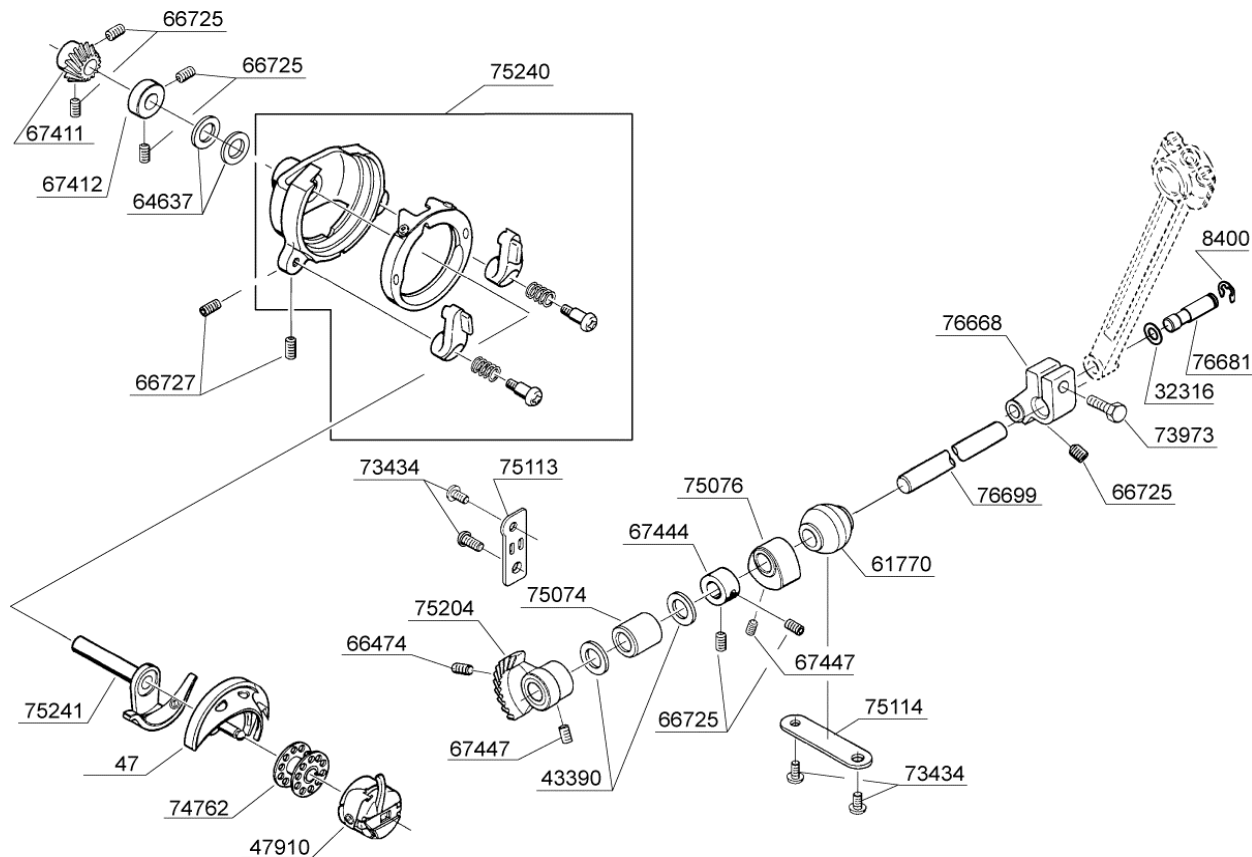
6702	40050710	NEEDLE
8400	40050711	E5 CLIP-ON-WASHER
10963	40050712	E6 CLIP-ON-WASHER
26934	40050715	#8 SCREW
28917	40050718	HOOK FOR SPRING
39542	40057410	CLIP-ON-WASHER
58727	40057415	NEEDLE BAR
66005	40050774	M2 PHILLIPS SCREW
66052	40050775	M4 SCREW
66725	40050781	M4 SCREW
67268	40050783	ECCENTRIC PIN
68343	40050789	PIN
74050	40050815	EXTENSION SPRING
75024	40050823	STOPPER
75025	40050824	GUIDE BLOCK
75027	40050825	COMPRESSION SPRING
75079	40057456	NEEDLE BAR SUPPORT
75112	40057470	LATCH PLATE
75184	40057490	M4 COUNTERSUNK HEAD SCREW
75237	40057501	SHAFT
76682	40057535	TORSION SPRING
76683	40057536	SHAFT
77037	40057556	NEEDLE BAR CLAMP
77421	40051071	THREADER ASSEMBLY
80003	40051080	NEEDLE CLAMP SET
88089	40059590	THREAD GUIDE

MODEL	HZL-25Z(120V)	HZL-25Z(230V)	PAGE			NO	PARTS NO.	DESCRIPTION
			4			37515	40050721	WASHER
						44267	40057412	SPRING WASHER
						61222	40050750	M4 PHILLIPS SCREW
						63524	40057422	M3 BOLT
						66727	40050782	M4 SCREW
						75106	40057466	PRESSER BAR GUIDE
						75107	40057467	BRACKET A
						75108	40057468	BRACKET B
						75111	40057469	PRESSER BAR GUIDE BLOCK
						75359	40057507	STOPPER
						76680	40057533	COMPRESSION SPRING
						76789	40057554	LEVER CAP
						77042	40051066	M4 PHILLIPS SCREW
						77043	40051067	FELT
						80065	40051081	#7 SCREW FOR SHANK
						# 88039	40055299	FINGER GUARD
						88063	40057581	SHANK
						88065	40057582	ZIGZAG PRESSER FOOT
						88067	40057583	PRESSER BAR

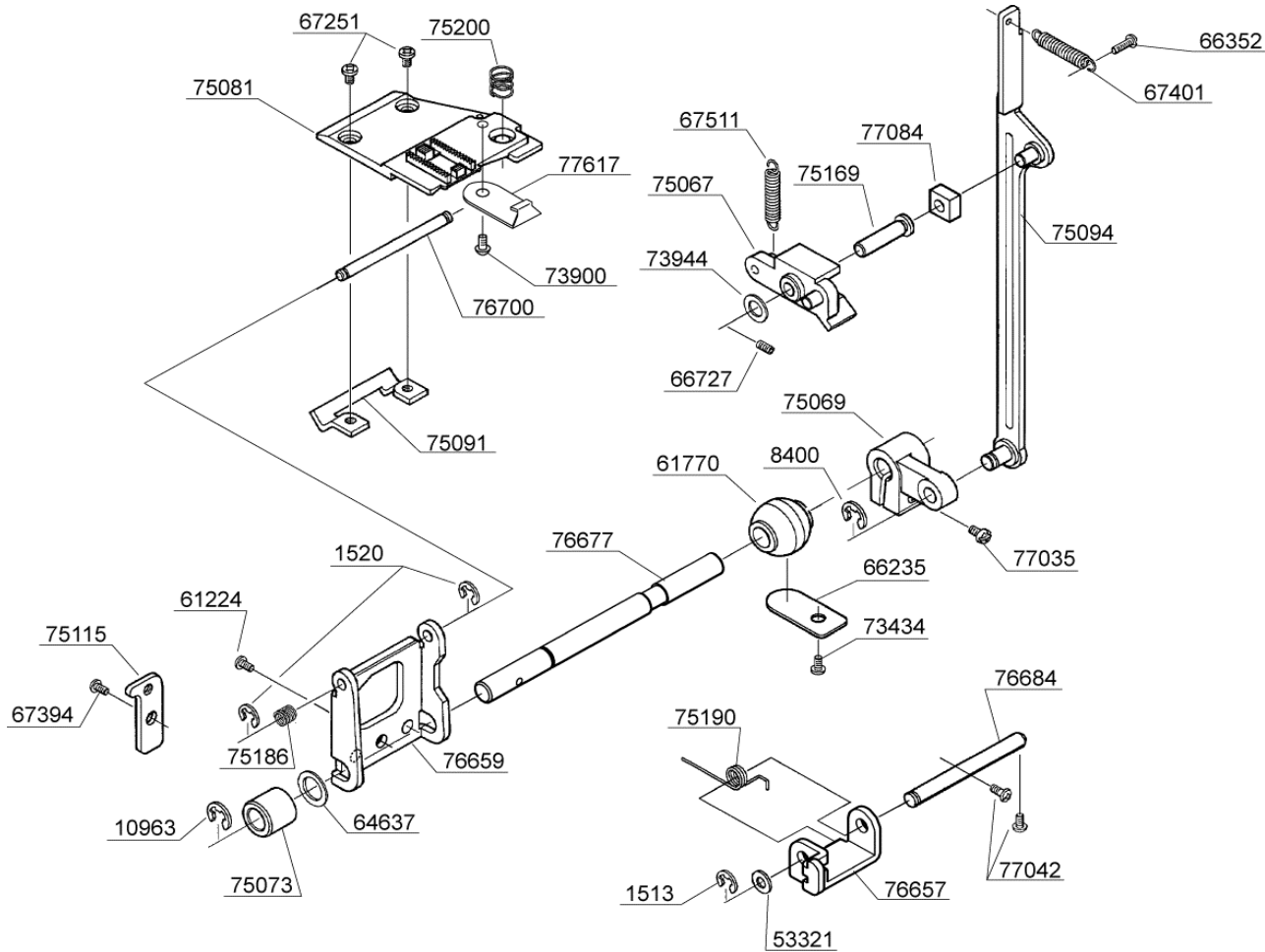


88039, 230V, ONLY

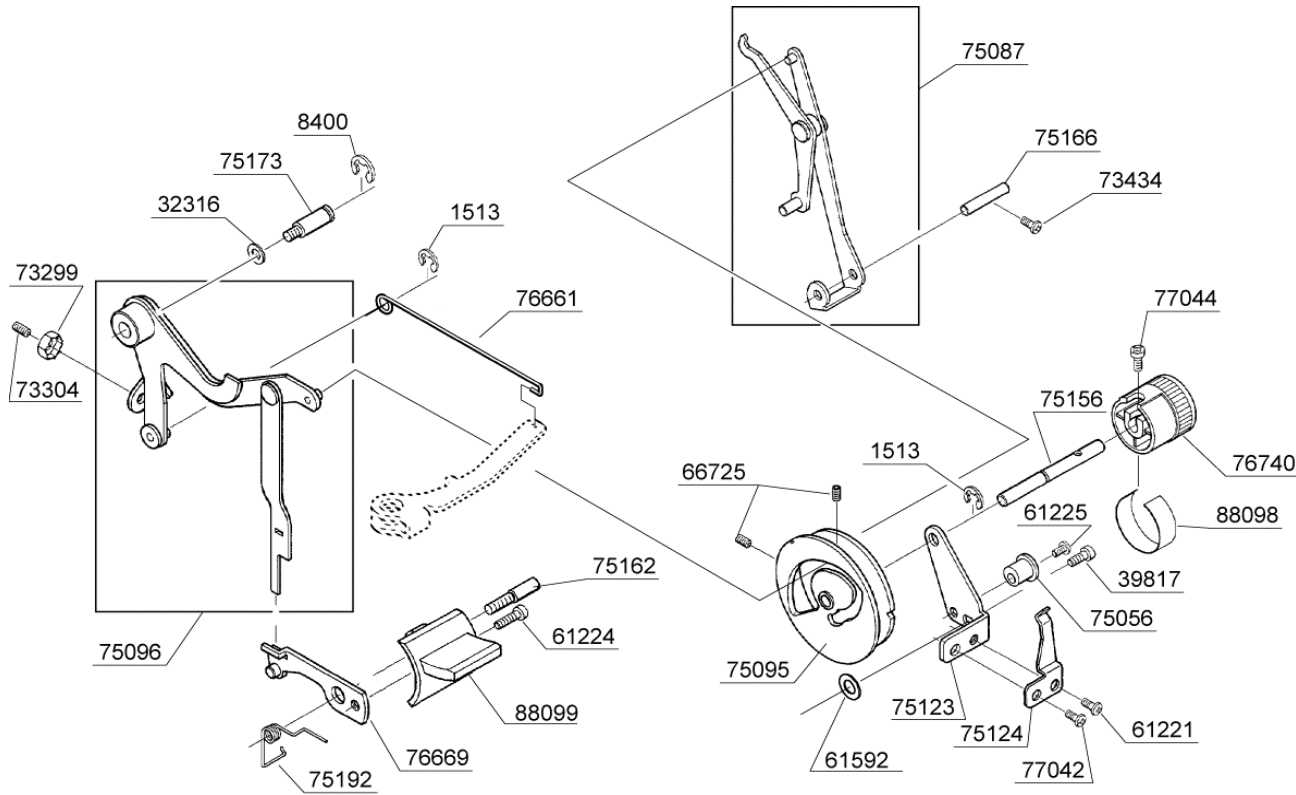
MODEL	HZL-25Z(120V)	HZL-25Z(230V)	PAGE		NO	PARTS NO.	DESCRIPTION
			5		47	40057405	SHUTTLE HOOK
					8400	40050711	E5 CLIP-ON-WASHER
					32316	40050719	WASHER
					43390	40050726	THRUST WASHER
					47910	40057413	BOBBIN CASE
					61770	40057420	BALL BUSHING
					64637	40057425	THRUST WASHER
					66474	40050779	M5 SCREW
					66725	40050781	M4 SCREW
					66727	40050782	M4 SCREW
					67411	40057431	SPIRAL GEAR
					67412	40057432	COLLAR
					67444	40050784	COLLAR
					67447	40050786	M5 SCREW
					73434	40050811	M4 PHILLIPS SCREW
					73973	40057438	M4 BOLT
					74762	A9117-001-000	BOBBIN
					75074	40057454	BUSHING
					75076	40057455	FEED-DOG LIFTING CAM
					75113	40057471	SECURING PLATE A
					75114	40057472	SECURING PLATE B
					75204	40057497	BEVEL GEAR
					75240	40057502	SHUTTLE RACE ASSEMBLY
					75241	40057503	SHUTTLE DRIVER
					76668	40057524	LOWER SHAFT ROCKER
					76681	40057534	HEADED PIN
					76699	40057538	LOWER SHAFT



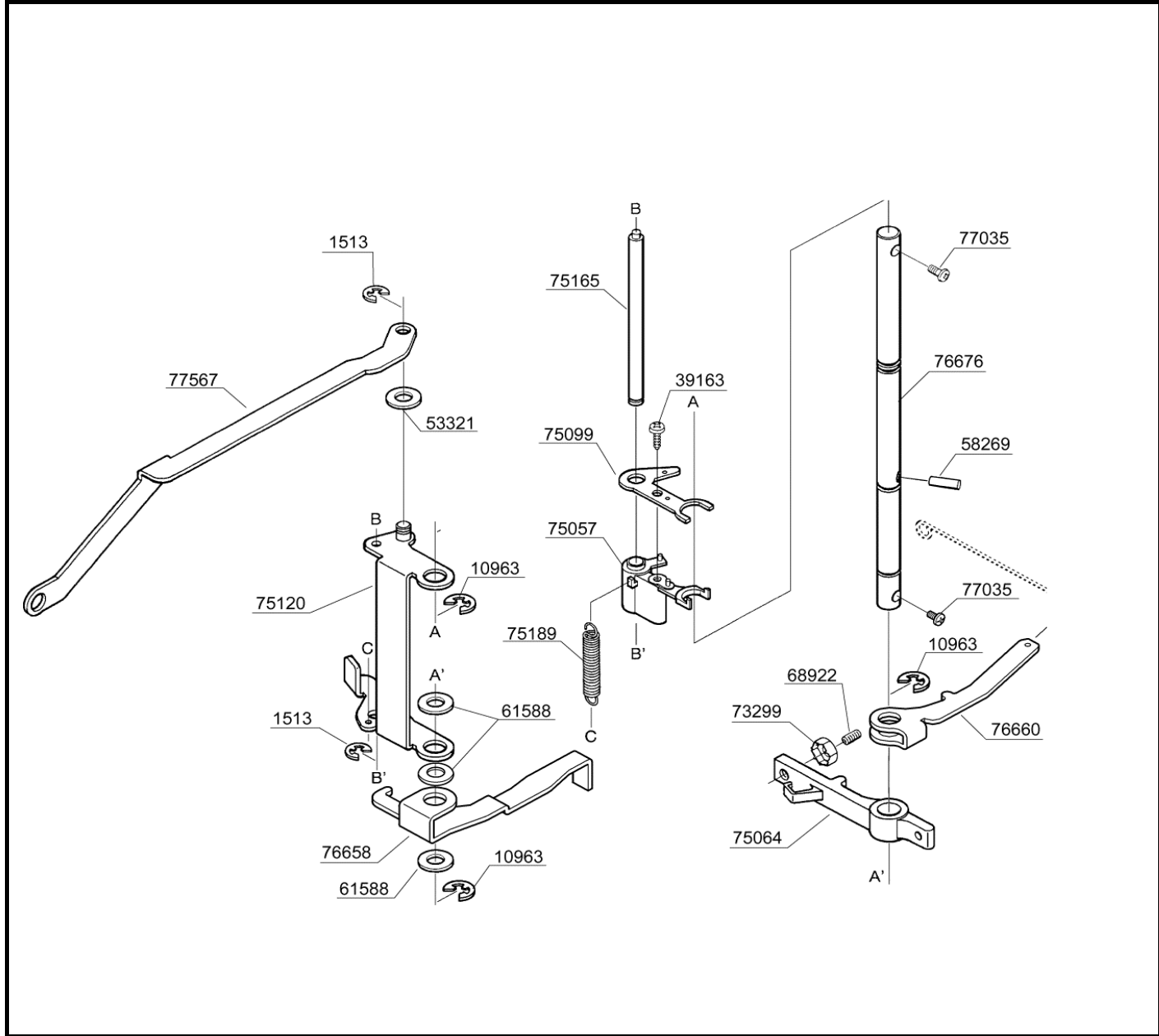
MODEL	HZL-25Z(120V)	HZL-25Z(230V)	PAGE			NO	PARTS NO.	DESCRIPTION
			6			1513	40050707	E4 CLIP-ON-WASHER
						1520	40050708	E3 CLIP-ON-WASHER
						8400	40050711	E5 CLIP-ON-WASHER
						10963	40050712	E6 CLIP-ON-WASHER
						53321	40050736	THRUST WASHER
						61224	40050751	M4 PHILLIPS SCREW
						61770	40057420	BALL BUSHING
						64637	40057425	THRUST WASHER
						66235	40050777	SECURING PLATE
						66352	40057427	M4 PHILLIPS SCREW
						66727	40050782	M4 SCREW
						67251	40057428	M3.5 PHILLIPS SCREW
						67394	40057429	M5 PHILLIPS SCREW
						67401	40057430	EXTENSION SPRING
						67511	40057433	EXTENSION SPRING
						73434	40050811	M4 PHILLIPS SCREW
						73900	40050814	M3 PHILLIPS SCREW
						73944	40057437	THRUST WASHER
						75067	40057450	FEED REGULATOR
						75069	40057451	FEED REGULATING SHAFT ROCKER
						75073	40057453	BUSHING
						75081	40057457	FEED-DOG
						75091	40057462	SECURING PLATE
						75094	40059941	FEED REGULATING ROD
						75115	40057473	SECURING PLATE C
						75169	40050840	HEADED PIN
						75186	40057491	COMPRESSION SPRING
						75190	40057493	TORSION SPRING
						75200	40057496	COMPRESSION SPRING
						76657	40057519	FEED-DOG LIFTING ARM BRACKET
						76659	40057521	FEED REGULATING BRACKET
						76677	40057529	FEED REGULATING SHAFT
						76684	40057537	SHAFT
						76700	40057540	SHAFT
						77035	40051064	M4 PHILLIP SCREW
						77042	40051066	M4 PHILLIPS SCREW
						77084	40057562	SLIDE BLOCK
						77617	40057570	LINK PLATE



MODEL	HZL-25Z(120V)	HZL-25Z(230V)	PAGE			NO	PARTS NO.	DESCRIPTION
			7			1513	40050707	E4 CLIP-ON-WASHER
						8400	40050712	E5 CLIP-ON-WASHER
						32316	40050719	WASHER
						39817	40050723	M4 PHILLIPS SCREW
						61221	40050749	M4 PHILLIPS SCREW
						61224	40050751	M4 PHILLIPS SCREW
						61225	40050752	M4 PHILLIPS SCREW
						61592	40057417	WASHER
						66725	40050781	M4 SCREW
						73299	40050808	M4 TORQUE NUT
						73304	40050809	M4 SCREW
						73434	40050811	M4 PHILLIPS SCREW
						75056	40057447	ECCENTRIC IDLER PULLEY
						75087	40057459	STRETCH STITCH CONTROL LINK ASSEMBLY
						75095	40057463	STITCH LENGTH CONTROL CAM
						75096	40057464	FEED CONTROL LINK ASSEMBLY
						75123	40057476	CONTROL DIAL BRACKET
						75124	40057477	LEAF SPRING
						75156	40057484	SHAFT
						75162	40057485	M4 STUD SCREW
						75166	40057487	SHAFT
						75173	40057488	M4 STUD SCREW
						75192	40057494	TORSION SPRING
						76661	40057523	BH WIRE ROD
						76669	40057525	REVERSE STITCH ARM
						76740	40057546	STITCH LENGTH CONTROL DIAL
						77042	40051066	M4 PHILLIPS SCREW
						77044	40057558	M3 PHILLIPS SCREW
						88098	40057584	SEAL
						88099	40057586	REVERSE STITCH LEVER



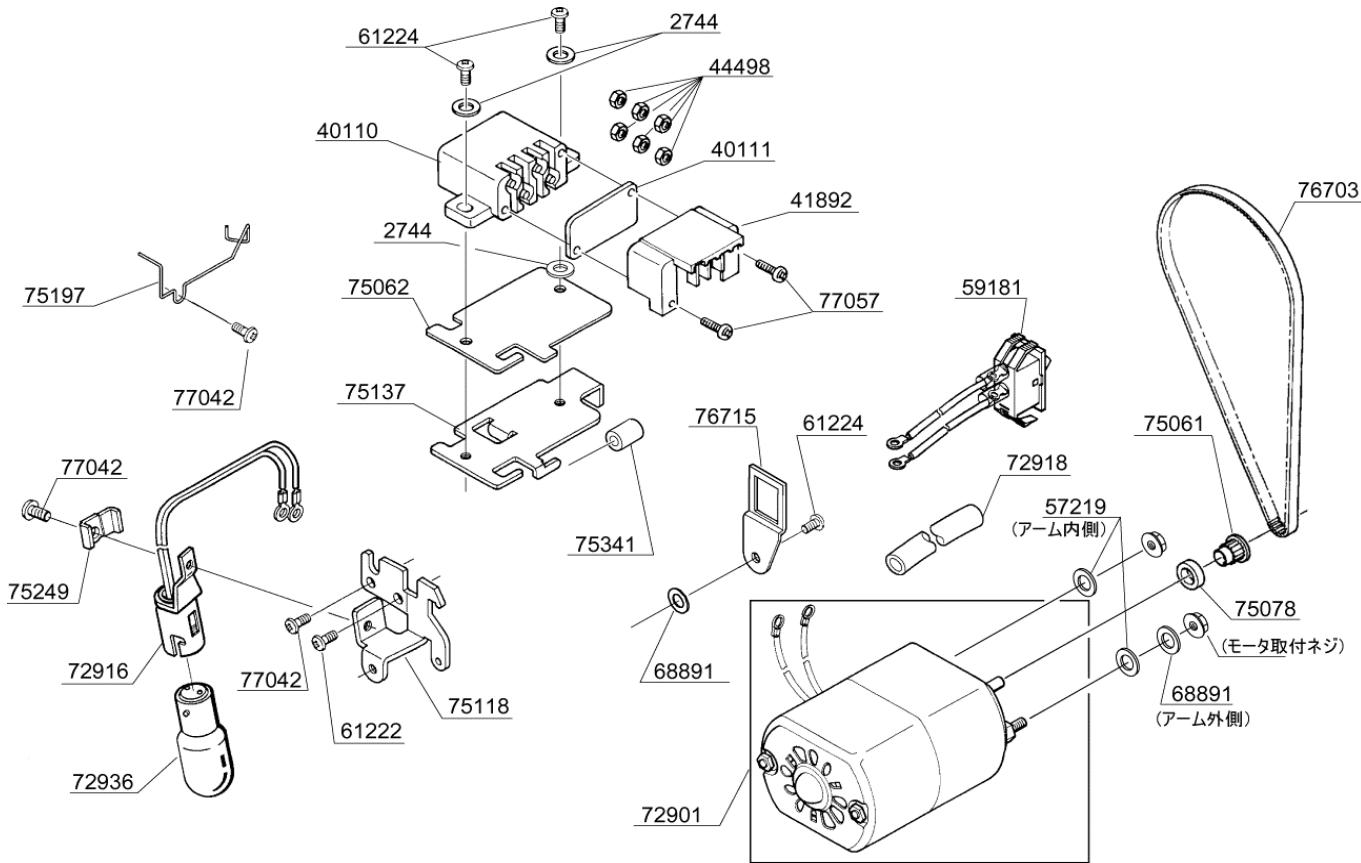
MODEL	HZL-25Z(120V)	HZL-25Z(230V)	PAGE			NO	PARTS NO.	DESCRIPTION
			10					



1513	40050707	E4 CLIP-ON-WASHER
10963	40050712	E6 CLIP-ON-WASHER
39163	40050722	TAPPING SCREW
53321	40050736	THRUST WASHER
58269	40050743	SPRING PIN
61588	40050757	WASHER
68922	40050793	M4 SCREW
73299	40050808	M4 TORQUE NUT
75057	40050829	ZIGZAG GUIDE BLOCK
75064	40050832	PATTERN SELECTING CAM CLAW
75099	40057465	PATTERN CAM FOLLOWER
75120	40057475	CAM FOLLOWER GUIDE BRACKET
75165	40057486	SHAFT B
75189	40050843	EXTENSION SPRING
76658	40057520	STRETCH STITCHING CAM FOLLOWER
76660	40057522	BH CAM FOLLOWER
76676	40057528	SHAFT A
77035	40051064	M4 PHILLIP SCREW
77567	40057569	ZIGZAG GUIDE BAR

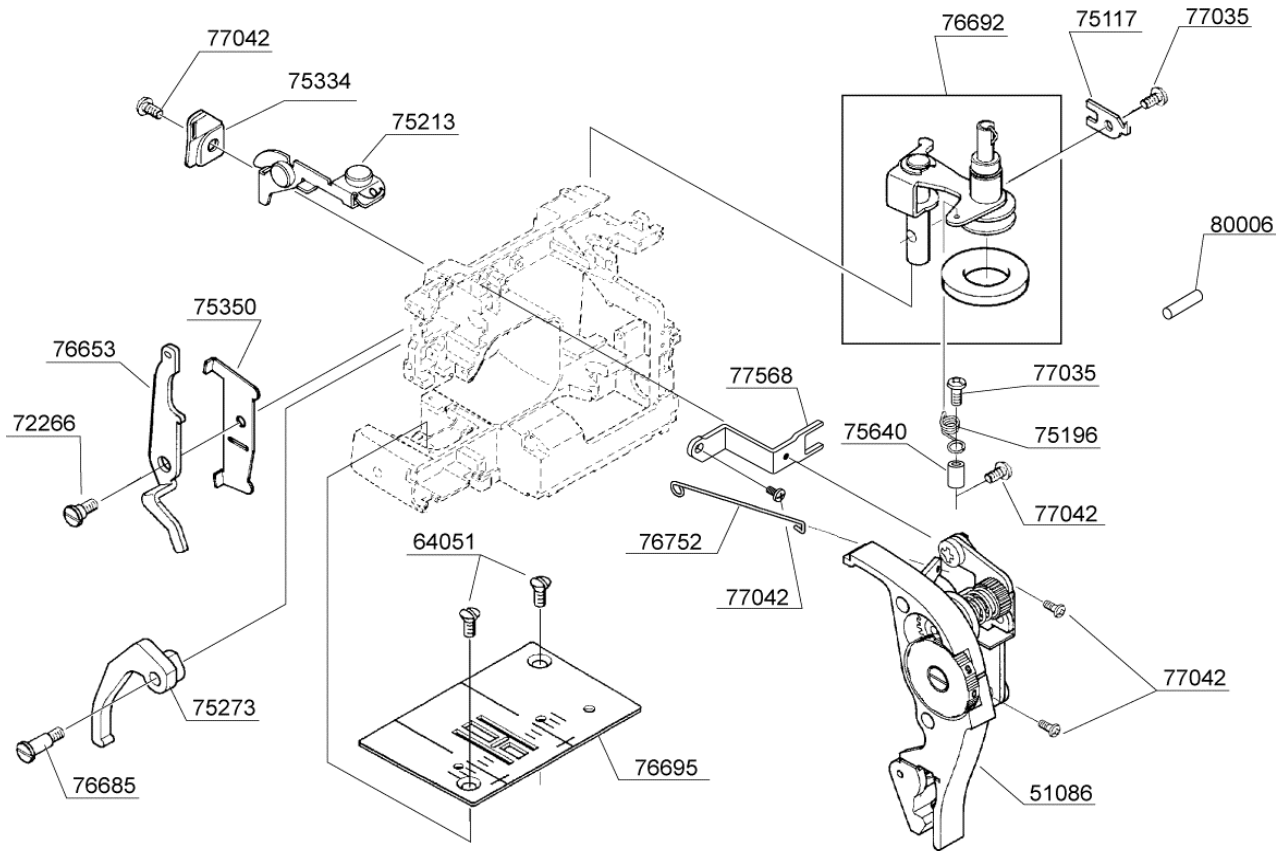
MODEL	HZL-25Z(120V)	HZL-25Z(230V)	PAGE			NO	PARTS NO.	DESCRIPTION
			11-1					

120V



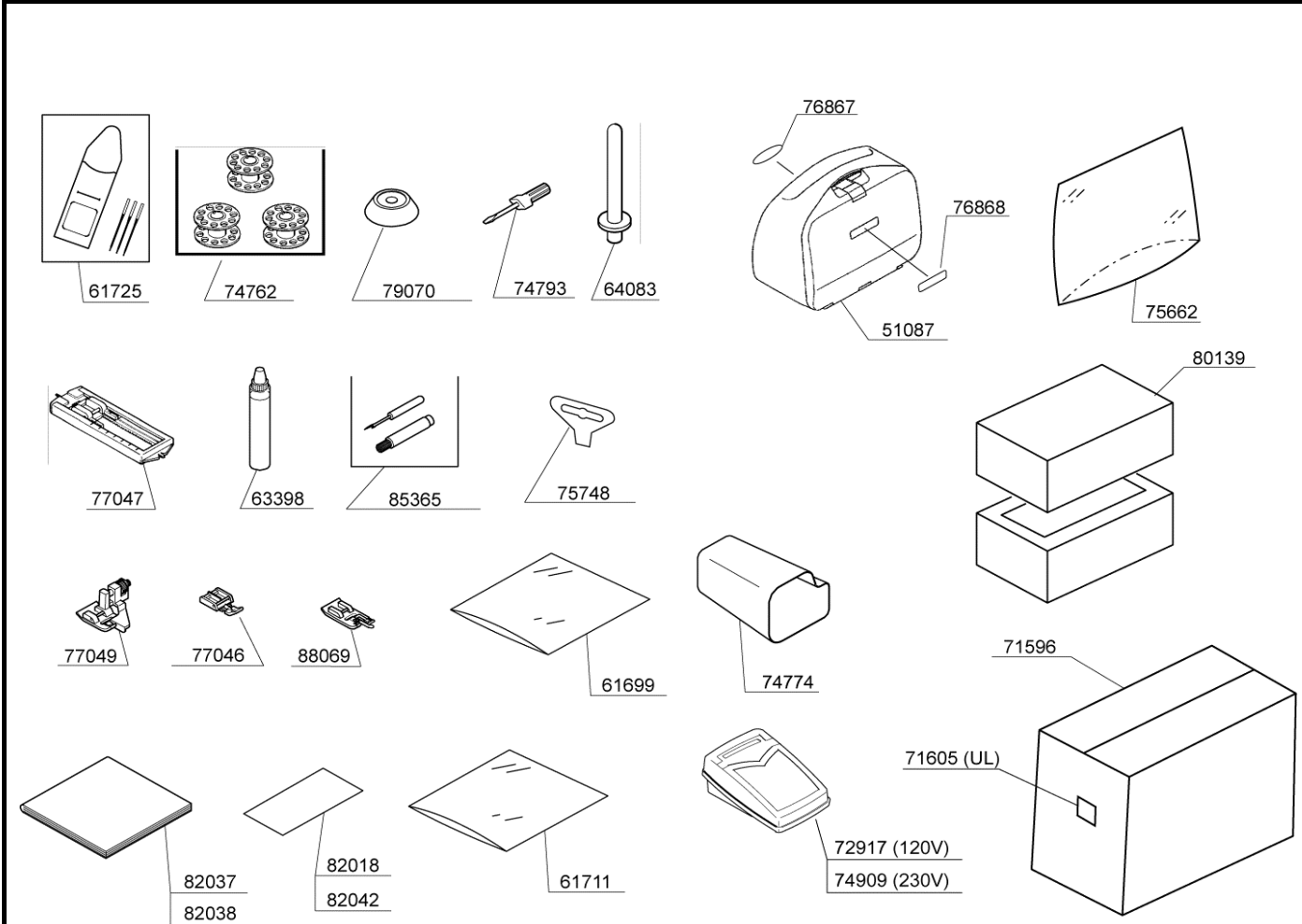
2744	40057407	WASHER
40110	40059942	TERMINAL BLOCK ASSEMBLY
40111	40059943	TERMINAL BLOCK COVER
41892	40059944	TERMINAL BLOCK COVER
44498	40055302	M3 NUT
57219	40057414	WASHER
59181	40059945	SWITCH ASSEMBLY
61222	40050750	M4 PHILIPS SCREW
61224	40050751	M4 PHILIPS SCREW
68891	40050792	WASHER
72901	40059946	MOTOR (YM-230-5C)
72916	40059947	LAMP CORD UNIT
72918	40059948	VINYL TUBE
72936	40055303	LIGHT BULB
75061	40050831	MOTOR PULLEY
75062	40057448	INSULATING SHEET
75078	40055311	MOTOR PULLEY FLANGE
75118	40057474	LAMP PLATE BRACKET
75137	40057482	TERMINAL BLOCK BRACKET
75197	40057495	CORD GUIDE
75249	40059949	HARNESS GUIDE
75341	40057506	VINYL TUBE
76703	40057542	MOTOR BELT
76715	40059950	SWITCH BRACKET
77042	40051066	M4 PHILIPS SCREW
77057	40059951	M3 PHILIPS SCREW

MODEL	HZL-25Z(120V)	HZL-25Z(230V)	PAGE			NO	PARTS NO.	DESCRIPTION
			12			51086	40058159	THREAD GUIDE PLATE UNIT
						64051	40050765	M4 SCREW
						72266	40050798	M4 STUD SCREW
						75117	40058160	PLATE
						75196	40050846	TORSION SPRING
						75213	40058161	THREAD GUIDE PLATE
						75273	40058162	PRESSER FOOT LIFTER
						75334	40058163	THREAD GUIDE PLATE
						75350	40058164	STOPPER
						75640	40058165	VINYL TUBE
						76653	40058166	TENSION RELEASE LEVER
						76685	40058167	M4 STUD SCREW
						76692	40058168	BOBBIN WINDER COMPLETE
						76695	40058169	NEEDLE PLATE
						76752	40058170	TENSION RELEASE BAR
						77035	40051064	M4 PHILLIP SCREW
						77042	40051066	M4 PHILLIPS SCREW
						77568	40058171	THREAD GUIDE PLATE UNIT BRACKET
						80006	40058172	SPRING PIN



MODEL	HZL-25Z(120V)	HZL-25Z(230V)	PAGE			NO	PARTS NO.	DESCRIPTION
			13					
<p>The diagram shows an exploded view of a sewing machine head assembly. Key components include the front cover (88094), side cover (76738), handle (76742), and bobbin winder latch (76440). Various screws and washers are shown in their respective positions. A note indicates that part 54350 is only for the 120V region and is a sticker for the face plate.</p>						54350	40050737	SEAL
						61224	40050751	M4 PHILLIPS SCREW
						63448	40057421	WASHER
						63560	40057423	M4 PHILLIPS SCREW
						64360	40050768	TOOTHED WASHER
						66319	40057426	M4 PHILLIPS SCREW
						68891	40050792	WASHER
						72791	40050800	M4 SCREW
						74795	40057442	TAPPING SCREW
						75127	40057479	LEAF SPRING
						75128	40057480	SECURING PLATE
						75178	40057489	PIN
						75216	40057499	REFLECTION SHEET
						75236	40057500	PIN
76395	40050981	TAPPING SCREW						
76440	40050990	BOBBIN WINDER LATCH						
76738	40059957	SIDE COVER						
76742	40057547	HANDLE						
76743	40057548	SHUTTLE RACE COVER						
77042	40051066	M4 PHILLIPS SCREW						
77396	40057563	BLADE						
88061	40057580	PLATE						
88094	40059958	FRONT COVER						
88095	40059959	FACE COVER						
88097	40059960	COVER						

MODEL	HZL-25Z(120V)	HZL-25Z(230V)	PAGE			NO	PARTS NO.	DESCRIPTION
			14					



51087	40059961	CARRYING CASE (WHITE)
61699	40057418	POLYETHYLENE BAG
61711	40050758	POLYETHYLENE BAG
61725	40050759	NEEDLE SET
63398	40050761	SEWING MACHINE OIL
64083	40057424	SPOOL PIN
71596	40059962	CARTON
71605	40059963	SEAL
72917	40059964	FOOT CONTROL (YC-482E)
74762	A9117-001-000	BOBBIN
74774	40055329	F.C.BOX
74793	40050818	SMALL SCREW DRIVER
74909	40059965	FOOT CONTROL (YC-450)
75662	40059966	POLYETHYLENE BAG
75748	40050854	SCREW DRIVER
76867	40059967	NAME PLATE (A)
76868	40059968	NAME PLATE (B)
77046	40057559	ZIPPER FOOT
77047	40057560	BUTTONHOLE FOOT
77049	40057561	BLIND STITCH FOOT
79070	40051078	SPOOL PIN CAP
80139	40059969	STYROFOAM PACKING
82018	40059970	WARRANTY CARD (CE)
82037	40053208	INSTRUCTION BOOK (Eng,Spa,Rus)
82038	40053209	INSTRUCTION BOOK (Fra,Spa,Italy)
82042	40059971	WARRANTY CARD (UL)
85365	40051094	BUTTONHOLE OPENER / BRUSH
88069	40057585	OVERCASTING FOOT

(Optional parts)

NO	PARTS NO.	DESCRIPTION
67421	40058019	DARNING PLATE
78636	40058018	WIDE TEBLE
76837	40058020	EVEN FEED FOOT
76838	40058021	1/4 INCH FOOT
77066	40058022	QUILTING GUIDE BAR
77079	40052013	QUILTING FOOT
88039	40055299	FINGER GUARD

JUKI CORPORATION
HOUSEHOLD SEWING MACHINE DIV.
8-2-1, KOKURYO-CHO,
CHOFU-SHI, TOKYO 182-8655
JAPAN

PHONE : 03 (3480) 5034
FAX : 03 (3480) 5037
40058011

Copyright © 2007 JUKI CORP.
All rights reserved throughout the world.

07.03 Printed in japan