

BUYER'S MODEL NO.	14J334	SECTION		PAGE	1	REVISION		REMARKS		PART NO.	DESCRIPTION
BUYER'S MODEL NAME										43389	THRUST WASHER
FACTORY MODEL	CE055S1									44066	SPRING PIN
ORIGINAL ISSUE	May, 2000	SERIAL NO.								47181	M4 PHILIPS SCREW
										57746	TAPPING SCREW
										66474	M5 SCREW
										66725	M4 SCREW
										67447	M5 SCREW
										68922	WASHER
										72271	BALL JOINT
										72376	BALANCE CAM
										72622	CRANK ROD
										72623	ECCENTRIC CAM
										72629	SLIDE BLOCK
										72631	ECCENTRIC CAM
										72634	CRANK ROD
										72635	ECCENTRIC CAM
										72636	CONNECTING ROD END
										72637	ECCENTRIC CAM
										72638	ECCENTRIC CAM
										72641	LOOPER DRIVING ARM
										72667	BELT PULLEY
										72679	NYLON WASHER
										72780	MAIN SHAFT
										72788	M4 STUD SCREW
										72806	M5 SCREW
										72858	WASHER
										73472	COLLAR
										77042	M4 PHILIPS SCREW
										79021	HAND WHEEL

BUYER'S MODEL NO.	14J334	SECTION		PAGE	2	REVISION		REMARKS		PART NO.	DESCRIPTION
BUYER'S MODEL NAME		—								8400	E5 CLIP-ON-WASHER
FACTORY MODEL	CE055S1									32316	WASHER
ORIGINAL ISSUE	May, 2000	SERIAL NO.								64179	SPRING PIN
										66620	COLLAR
										66725	M4 SCREW
										67447	M5 SCREW
										72271	BALL JOINT
										72341	THRUST WASHER
										72379	ECCENTRIC CAM
										72603	FEED ARM
										72624	FEED BASE
										72625	D.F. FEED BASE
										72626	FEED REGULATING ARM
										72632	FEED REGULATING BLOCK
										72633	SLIDE BLOCK
										72734	WASHER
										72781	SHAFT
										72792	PIN
										72798	PIN
										72802	SHAFT
										72803	SHAFT
										72813	M3.5 SCREW
										72825	TORSION SPRING
77015	REAR FEED DOG										
77016	FRONT FEED DOG										
77039	SLIDE BLOCK										
77042	M4 PHILIPS SCREW										

BUYER'S MODEL NO.	14J334	SECTION		PAGE	3	REVISION		REMARKS		PART NO.	DESCRIPTION
BUYER'S MODEL NAME		-		3						1513	E4 CLIP-ON-WASHER
FACTORY MODEL	CE055S1									2206	WASHER
ORIGINAL ISSUE	May, 2000	SERIAL NO.								24133	PIPE KNOCK PIN
										37910	CLIP-ON-WASHER
										43390	THRUST WASHER
										44044	STUD
										61221	M4 PHILIPS SCREW
										64204	M4 PHILIPS SCREW
										66437	BUSH
										66474	M5 SCREW
										66725	M4 SCREW
										67440	CRANK-ROD ARM
										67444	COLLAR
										67447	M5 SCREW
										67455	HOLDER
										67847	#7 SCREW
										72270	NEEDLE CLAMP
										72274	M3 SCREW
										72287	NEEDLE BAR CRANK
										72337	THREAD GUIDE
										72596	NEEDLE
										72612	MAIN SHAFT ARM LEVER
										72750	THREAD GUIDE
72751	OSCILLATING LEVER										
72752	CONNECTING ARM										
72776	THREAD GUIDE										
72777	NEEDLE BAR										
72779	UPPER SHAFT										
72796	PIN										
72797	CENTER PIN										
72855	THREADER POSITIONER										

BUYER'S MODEL NO.	14J334	SECTION		PAGE	4	REVISION		REMARKS		PART NO.	DESCRIPTION
BUYER'S MODEL NAME		—								1513	E4 CLIP-ON-WASHER
FACTORY MODEL	CE055S1									8400	E5 CLIP-ON-WASHER
ORIGINAL ISSUE	May, 2000	SERIAL NO.								32316	WASHER
										58220	WASHER
										61221	M4 PHILIPS SCREW
										62215	M4 NUT
										63278	PRESSER BAR
										72326	WASHER
										72643	PRESSER BAR GUIDE BLOCK
										72717	BRACKET
										72720	BRACKET
										72725	GUIDE PLATE
										72727	GUIDE PLATE
										72728	TENSION RELEASE LEVER
										72766	LIFTER
										72807	M4 STUD SCREW
										72829	COMPRESSION SPRING
										72848	#4 STUD SCREW
										72849	#7 PHILIPS SCREW
										74595	M5 SCREW
										77006	PRESSER FOOT HOLDER
										77017	PRESSER FOOT HOLDER
										77042	M4 PHILIPS SCREW
79024	PRESSER CONTROL KNOB										
79025	PRESSER FOOT LIFTING LEVER										

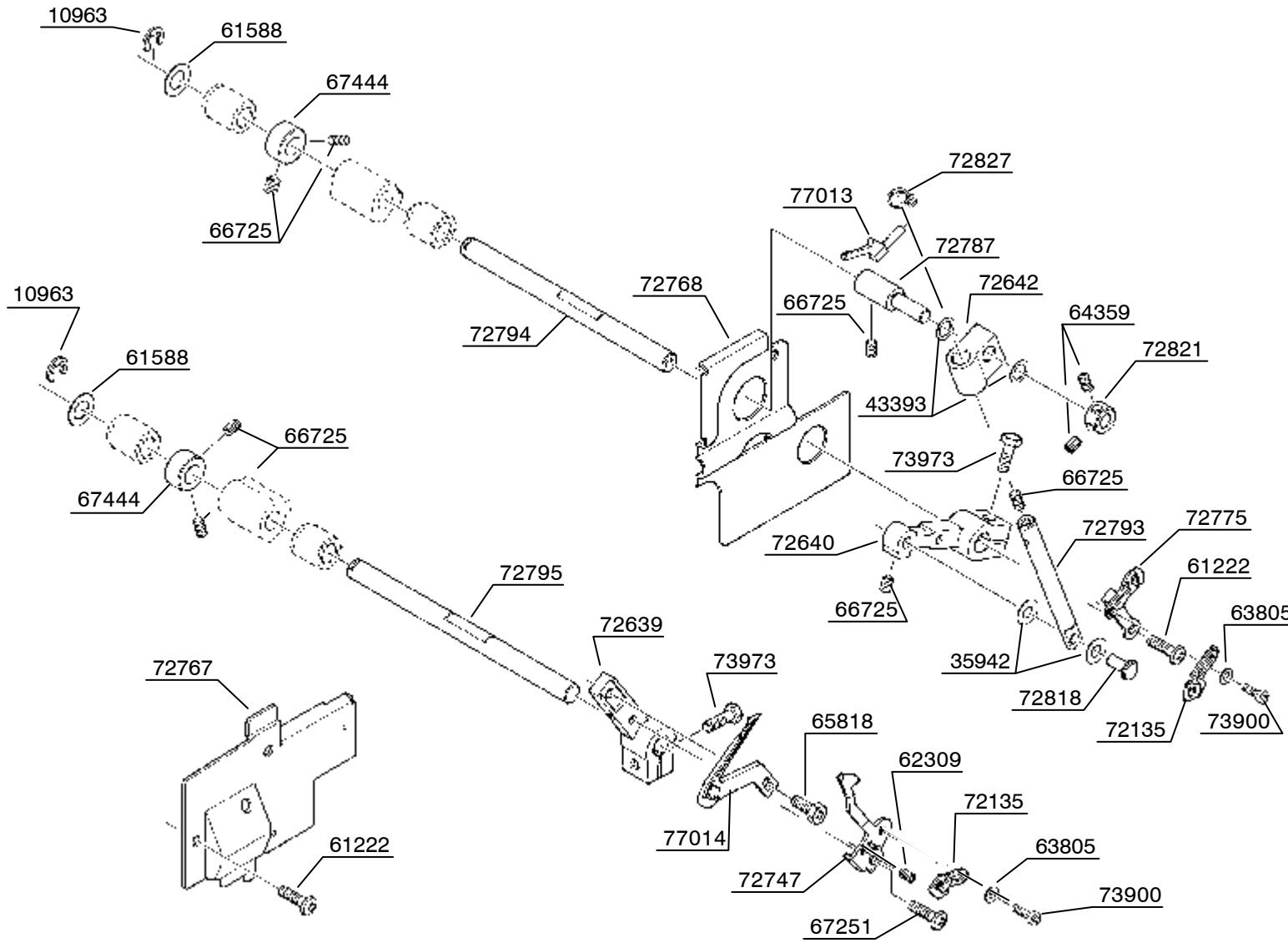
BUYER'S MODEL NO.	14J334	SECTION		PAGE	5	REVISION		REMARKS		PART NO.	DESCRIPTION	
BUYER'S MODEL NAME										1513	E4 CLIP-ON-WASHER	
FACTORY MODEL	CE055S1									61222	M4 PHILIPS SCREW	
ORIGINAL ISSUE	May, 2000	SERIAL NO.								66620	COLLAR	
<p>The diagram shows an exploded view of a mechanical assembly. Key components include a dial (79056) at the top right, a shaft (72785) passing through it, and a cam (72714) on the shaft. A control arm (72729) is connected to the shaft via a connecting plate (72730) and a leaf spring (72737). Various stoppers (72882, 72885) and washers (67617) are used to adjust the mechanism. Screws (77042, 66725) and washers (61222) are used for assembly. The diagram is annotated with numerous part numbers and their corresponding labels.</p>										66725	M4 SCREW	
											67617	WASHER
											72714	STITCH LENGTH CONTROL CAM
											72729	STITCH LENGTH CONTROL ARM
											72730	CONNECTING PLATE
											72737	LEAF SPRING
											72785	SHAFT
											72882	STOPPER
											72885	STOPPER
											77042	M4 PHILIPS SCREW
	79056	STITCH LENGTH CONTROL DIAL										

BUYER'S MODEL NO.	14J334	SECTION		PAGE	6	REVISION		REMARKS		PART NO.	DESCRIPTION
BUYER'S MODEL NAME										1513	E4 CLIP-ON-WASHER
FACTORY MODEL	CE055S1									1520	E3 CLIP-ON-WASHER
ORIGINAL ISSUE	May, 2000	SERIAL NO.								2206	WASHER
										46293	CLIP-ON-WASHER
										62215	M4 NUT
										66352	M4 PHILIPS SCREW
										66437	BUSH
										66620	COLLAR
										66725	M4 SCREW
										72627	FEED CONTROL LOCKING ARM
										72628	D.F. LINK
										72633	SLIDE BLOCK
										72644	SLIDE BLOCK
										72683	D.F. ARM
										72686	CONNECTING ROD
										72731	D.F. ARM (A)
										72733	D.F. ARM (C)
										72735	D.F. ARM (D)
										72736	CONNECTING PLATE
										72786	SHAFT
										72799	PIN
										72800	PIN
										72801	SHAFT
										72804	PIN
										72805	SHAFT
										72835	HOOK FOR SPRING
										72836	EXTENSION SPRING
										72837	TORSION SPRING
										79031	D.F. DIAL

BUYER'S MODEL NO.	14J334	SECTION	PAGE	REVISION	REMARKS	PART NO.	DESCRIPTION
BUYER'S MODEL NAME		—	7			1615	WASHER
FACTORY MODEL	CE055S1					2744	WASHER
ORIGINAL ISSUE	May, 2000	SERIAL NO.				4844	WASHER
						8400	E5 CLIP-ON-WASHER
						10963	E6 CLIP-ON-WASHER
						61224	M4 PHILIPS SCREW
						62309	M3 SCREW
						63173	PIN
						63501	WASHER
						64653	M3 SCREW
						66725	M4 SCREW
						67445	COLLAR
						67447	M5 SCREW
						72160	STUD
						72165	KNIFE RELEASE KNOB
						72168	COLLAR
						72169	KNOB MOUNTING BRACKET
						72171	LINK (B)
						72180	STUD
						72183	M3.5 BOLT
						72187	COMPRESSION SPRING
						72191	STUD
						72207	COMPRESSION SPRING
						72258	DRIVING ARM
						72261	SHAFT
						72296	COMPRESSION SPRING
						72392	SPRING PLATE
						72645	LINK
72646	POSITIONER						
72704	LOWER KNIFE HOLDER						
72744	NEEDLE PLATE HOLDER						
72745	LEAF SPRING						
72759	LEVER						
72791	M4 SCREW						
72815	SHAFT						
72817	SHAFT						
72819	HEXAGONAL PIN						
72838	STUD						
77005	LOWER KNIFE						
77042	M4 PHILIPS SCREW						
77044	M3 PHILIPS SCREW						
77053	M3 PHILIPS SCREW						
77073	UPPER KNIFE						
79026	CONTROL KNOB						
79029	LOWER KNIFE COVER						

BUYER'S MODEL NO.	14J334	SECTION		PAGE	8	REVISION		REMARKS		PART NO.	DESCRIPTION
BUYER'S MODEL NAME		—								10963	E6 CLIP-ON-WASHER
FACTORY MODEL	CE055S1									63163	KNIFE LEVER ASSEMBLY
ORIGINAL ISSUE	May, 2000	SERIAL NO.								63171	FIXING BASE
										63264	M5 BOLT WITH WASHER
										63514	STUD
										66725	M4 SCREW
										67445	COLLAR
										72746	NEEDLE PLATE HOLDER
										72748	NEEDLE RECEIVER (B)
										72791	M4 SCREW
										72812	SHAFT
										72899	NEEDLE PLATE
										77042	M4 PHILIPS SCREW
77056	WASHER										

BUYER'S MODEL NO.	14J334	SECTION	PAGE	REVISION	REMARKS	PART NO.	DESCRIPTION
BUYER'S MODEL NAME		—	9			10963	E6 CLIP-ON-WASHER
FACTORY MODEL	CE055S1					35942	THRUST WASHER
ORIGINAL ISSUE	May, 2000	SERIAL NO.				43393	WASHER
						61222	M4 PHILIPS SCREW
						61588	WASHER
						62309	M3 SCREW
						63805	WASHER
						64359	M4 SCREW
						65818	M4 BOLT
						66725	M4 SCREW
						67251	M3.5 PHILIPS SCREW
						67444	COLLAR
						72135	THREAD GUIDE (B)
						72639	LOOPER BASE
						72640	UPPER LOOPER SUPPORTING ARM
						72642	PIVOT
						72747	NEEDLE RECEIVER (A)
						72767	BED COVER
						72768	LOOPER COVER
						72775	THREAD GUIDE (A)
						72787	PIN
						72793	LOOPER SLIDE SHAFT
						72794	SHAFT
						72795	SHAFT
						72818	PIN
						72821	COLLAR
						72827	THREAD GUIDE
						73900	M3 PHILIPS SCREW
						73973	M4 BOLT
						77013	UPPER LOOPER
						77014	LOWER LOOPER

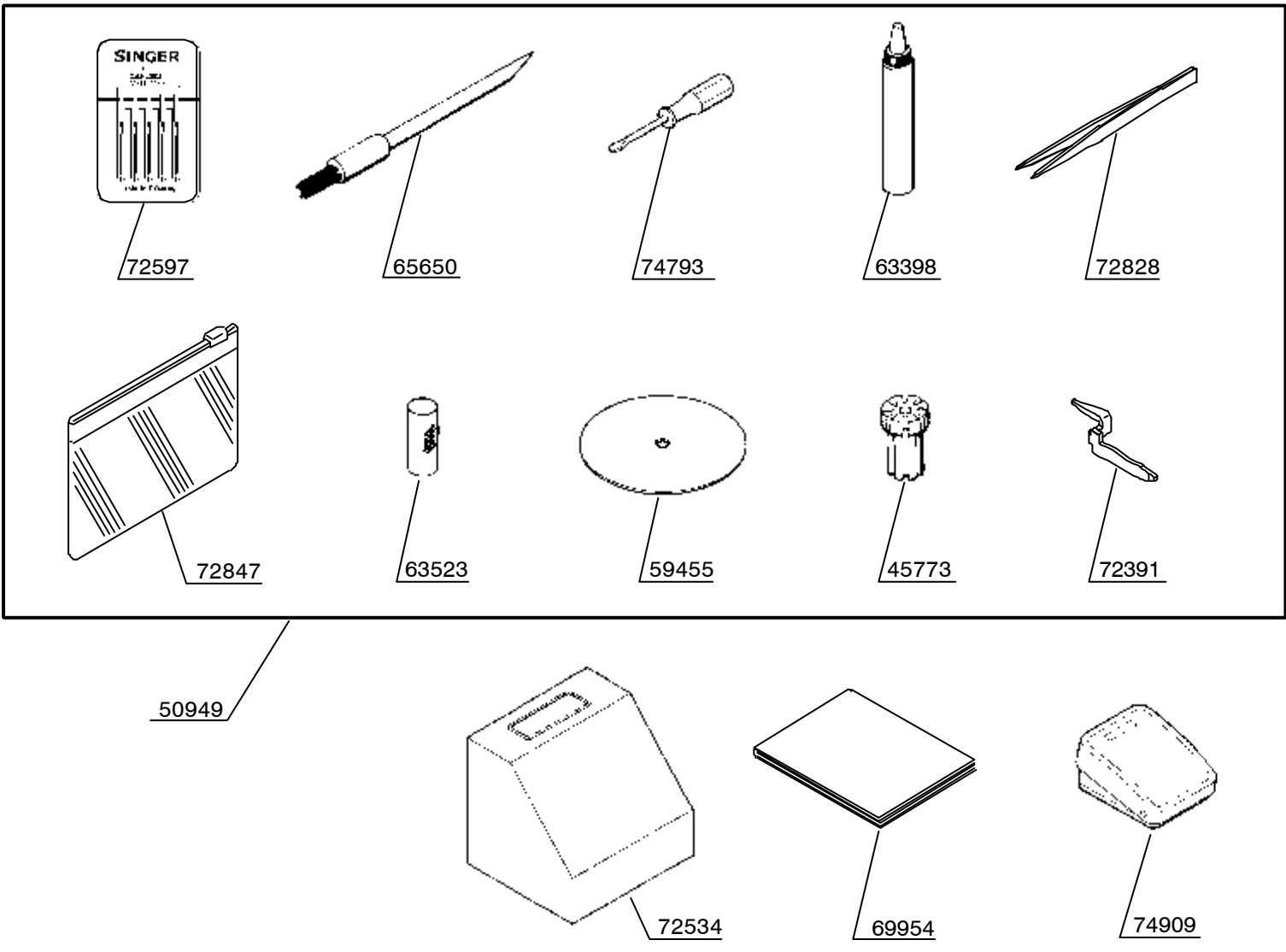


BUYER'S MODEL NO.	14J334	SECTION	PAGE	REVISION	REMARKS	PART NO.	DESCRIPTION
BUYER'S MODEL NAME		-	10			41892	TERMINAL BLOCK COVER
FACTORY MODEL	CE055S1					42269	WASHER
ORIGINAL ISSUE	May, 2000	SERIAL NO.				44498	M3 NUT
						54479	M2.5 PHILIPS SCREW
						56675	MOTOR PULLEY
						59181	SWITCH ASSEMBLY
						61221	M4 PHILIPS SCREW
						61224	M4 PHILIPS SCREW
						66311	M5 BOLT WITH WASHER
						67701	TIMING BELT
						68891	WASHER
						72385	REFLECTION PLATE
						72649	TERMINAL CASE
						72740	VINYL TUBE
						72760	TERMINAL BRACKET
						72765	SWITCH BRACKET
						72773	CORD GUIDE
						72922	LAMP HOLDER BRACKET
						72924	LAMP HOLDER ASSEMBLY
						72925	CAP BOLT
						72935	LIGHT BULB
						72939	HARNESS
						72940	MOTOR BRACKET
72951	MOTOR						
72988	M4 PHILIPS SCREW WITH WASHER						
72993	TERMINAL BLOCK						
74358	WASHER						
74913	TERMINAL BLOCK COVER						
77042	M4 PHILIPS SCREW						
77057	M3 PHILIPS SCREW						
77078	CORD GUARD						

BUYER'S MODEL NO.	14J334	SECTION		PAGE	11	REVISION		REMARKS		PART NO.	DESCRIPTION
BUYER'S MODEL NAME										10963	E6 CLIP-ON-WASHER
FACTORY MODEL	CE055S1									44125	SPOOL PIN
ORIGINAL ISSUE	May, 2000	SERIAL NO.								61225	M4 PHILIPS SCREW
										61588	WASHER
										68891	WASHER
										72288	THREAD
										72289	THREAD
										72709	LOVER PLATE
										72713	BRACKET
										72764	LEAF SPRING
										72791	M4 SCREW
										72820	EXTENSION BAR
										72884	DETACHABLE INSERT PLATE
										77042	M4 PHILIPS SCREW
										79000	DETACHABLE CORD GUIDE
										79011	BED COVER
										79018	THREAD GUIDE
										79019	GUIDE PLATE
										79027	HOLDER
										79039	M4 PHILIPS SCREW
										79044	FACE COVER
										79046	SHUTTER
										79051	TOP COVER
79053	SIDE COVER										
79070	SPOOL PIN CAP										

BUYER'S MODEL NO.	14J334	SECTION	PAGE	REVISION	REMARKS	PART NO.	DESCRIPTION
BUYER'S MODEL NAME		-	12			8400	E5 CLIP-ON-WASHER
FACTORY MODEL	CE055S1					39160	TAPPING SCREW
ORIGINAL ISSUE	May, 2000	SERIAL NO.				55599	SPRING PIN
						58024	TAPPING SCREW
						61225	M4 PHILIPS SCREW
						64618	TAPPING SCREW
						65736	M4 PHILLIPS SCREW
						72344	SHAFT
						72347	PRESSER DISC RECEIVER
						72348	COMPRESSION SPRING
						72349	COMPRESSION SPRING
						72350	TOOTHED WASHER
						72351	TORSION SPRING
						72369	D.T. GUIDE PLATE
						72395	THREAD GUIDE
						72726	DIAL TENSION DISC (B)
						72749	DIAL TENSION DISC (A)
						72757	THREAD GUIDE (A)
						72761	PRESSER DISC
						72830	COMPRESSION SPRING
						72831	COMPRESSION SPRING
						72840	SPONGE
						72842	THREADING SHEET
						72871	MOUNTING BRACKET
						72875	THREAD GUIDE PLATE
						72879	THREAD GUIDE
						72891	THREAD GUIDE
						72892	BUSHING
						77042	M4 PHILIPS SCREW
						79002	D.T. DIAL

BUYER'S MODEL NO.	14J334	SECTION	PAGE	REVISION	REMARKS	PART NO.	DESCRIPTION
BUYER'S MODEL NAME		-	13			1520	E3 CLIP-ON-WASHER
FACTORY MODEL	CE055S1					39160	TAPPING SCREW
ORIGINAL ISSUE	May, 2000	SERIAL NO.				61224	M4 PHILIPS SCREW
						72598	RUBBER CUSHION
						72662	BASE
						72681	COMPRESSION SPRING
						72753	HINGED BRACKET (A)
						72754	HINGED BRACKET (B)
						72808	SHAFT
						72841	SPONGE HOLDER
						77042	M4 PHILIPS SCREW
						79045	FRONT COVER
						79047	LINT BOX
						79052	INNER ATTACHMENT CASE

BUYER'S MODEL NO.	14J334	SECTION		PAGE	14	REVISION		REMARKS		PART NO.	DESCRIPTION
BUYER'S MODEL NAME		—								45773	CUSHION HOLDER
FACTORY MODEL	CE055S1									50949	ACCESSORY SET
ORIGINAL ISSUE	May, 2000	SERIAL NO.								59455	EXTENSION PLATE
										63398	SEWING MACHINE OIL
										63523	NET
										65650	CLEANING BRUSH
										69954	BOOK(ITA.,ENG.)
										72391	STITCH FINGER
										72534	DUST COVER
										72597	NEEDLE SET
										72828	TWEEZERS
										72847	ACCESSORY VINYL BAG
										74793	SMALL SCREW DRIVER
										74909	FOOT CONTROL

BUYER'S MODEL NO. 14J334

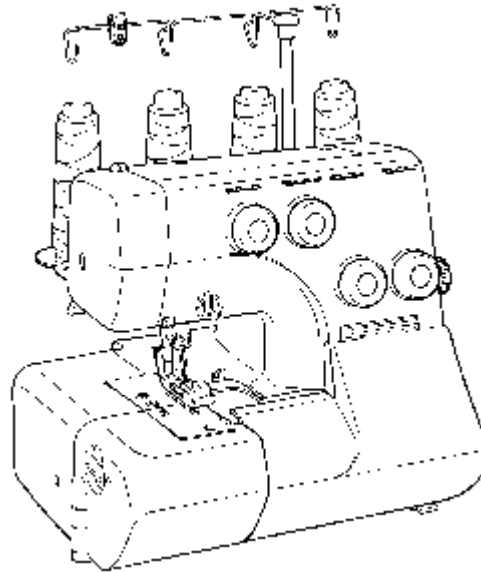
FACTORY MODEL CE055S1

ORIGINAL ISSUE May, 2000

SECTION —

REFER TO IMPORTANT NOTICE BELOW

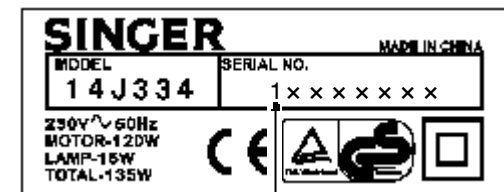
PARTS LIST FOR SERGER MODEL 14J334



IMPORTANT:

WHEN ORDERING THE PARTS ALWAYS CHECK THE SERIAL NUMBER OF THE MACHINE.

FIRST DIGIT OF THE SERIAL NUMBER MUST MATCH WITH THE LAST DIGIT OF THE FACTORY MODEL ABOVE.



FIRST DIGIT

SINGER